

Product Code
706564

Rev.Nr.
08/04/2021

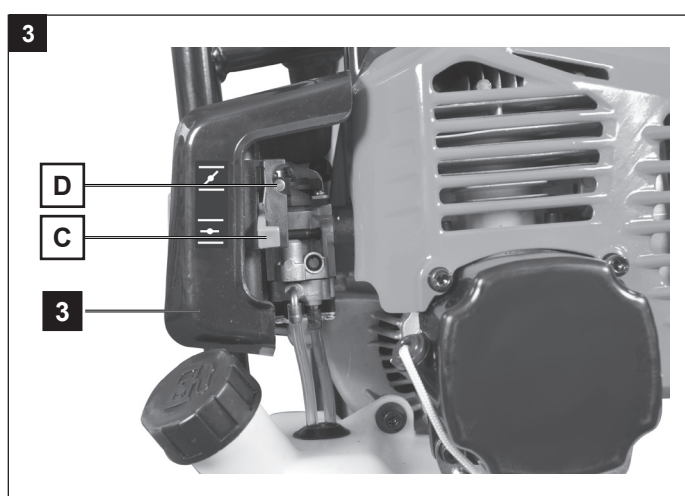
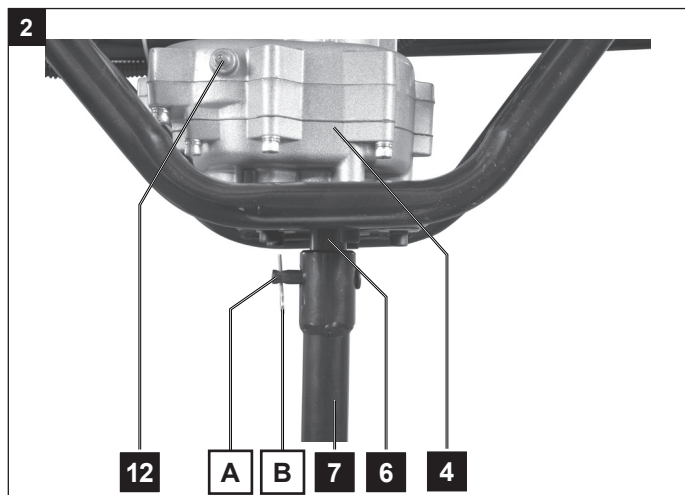
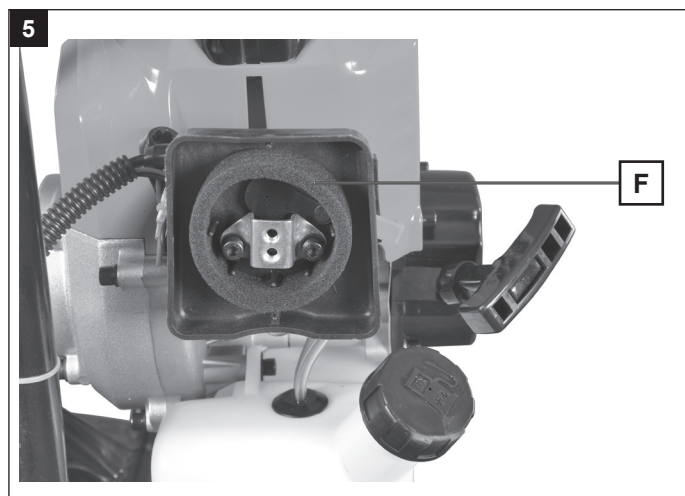
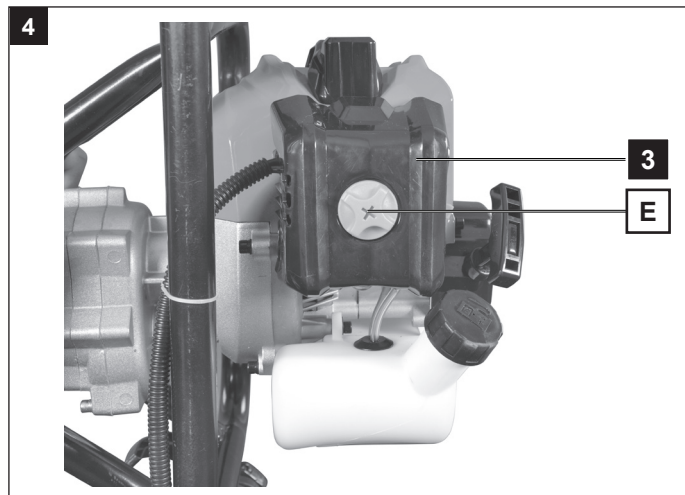
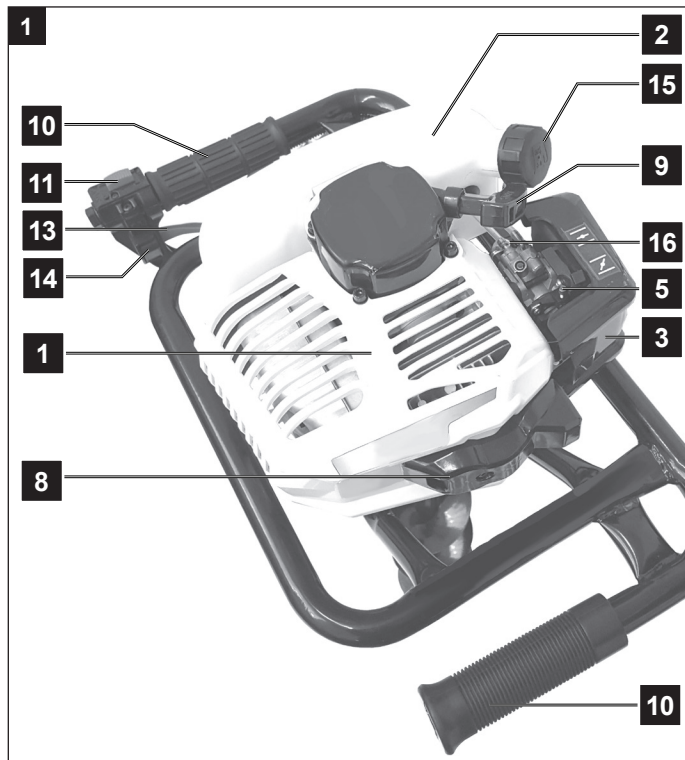
CE

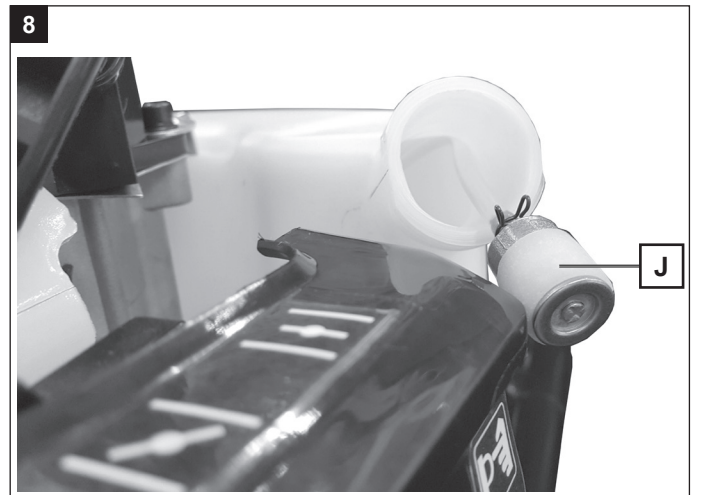
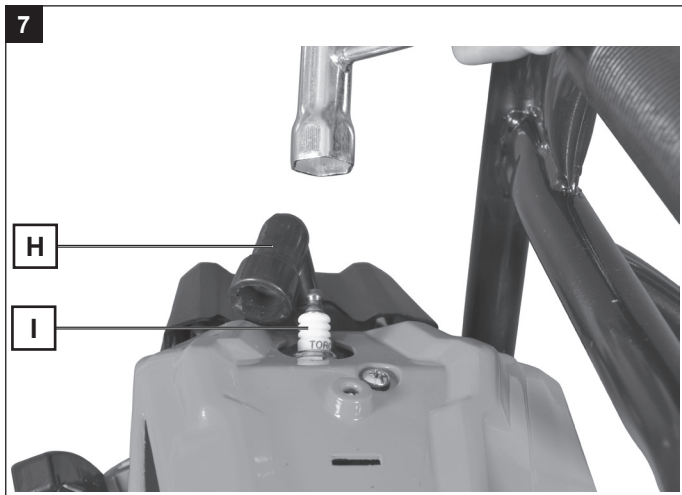
scheppach



EB1700

AUS Earth auger





Explanation of the symbols on the equipment

	<p>Read the complete user guide before using the appliance</p>
	<p>Read, understand and follow all warnings.</p>
	<p>Always wear safety glasses, hearing protection and a safety helmet.</p>
	<p>Wear security and anti-vibration gloves when you use the device.</p>
	<p>Always wear non-skid safety shoes with cut protection when using this product.</p>
	<p>Important. Exhaust gas is poisonous, do not operate in an unventilated area.</p>
	<p>Open flames at your workplace are prohibited!</p>
	<p>Keep bystanders away!</p>
	<p>There is a risk of debris being ejected when the engine is running. Make sure you keep a safe distance. Caution thrown objects when operating.</p>
	<p>Danger - Hot surface!</p>
	<p>Guaranteed sound power level of the device.</p>
	<p>Fuel filler cap.</p>
	<p>Choke</p>

Table of contents:	Page:
1. Introduction	6
2. Device description (fig. 1-3)	6
3. Scope of delivery.....	6
4. Intended use.....	6
5. Safety information	7
6. Technical data	9
7. Before operation.....	10
8. Operation	10
9. Cleaning and maintenance	11
10. Storage/Transport	12
11. Disposal and recycling	12
12. Troubleshooting.....	13

1. Introduction

Dear customer,

We hope you have a lot of fun and success using your new machine.

Note:

According to the applicable product liability laws, the manufacturer of the device does not assume liability for damages to the product or damages caused by the product that occurs due to:

- Improper handling,
- Non-compliance of the operating instructions,
- Repairs by third parties, not by authorized service technicians,
- Installation and replacement of non-original spare parts,
- Application other than specified,

We recommend:

Read through the complete text in the operating instructions before installing and commissioning the device. The operating instructions are intended to help the user to become familiar with the machine and take advantage of its application possibilities in accordance with the recommendations. The operating instructions contain important information on how to operate the machine safely, professionally and economically, how to avoid danger, costly repairs, reduce downtimes and how to increase reliability and service life of the machine.

In addition to the safety regulations in the operating instructions, you have to meet the applicable regulations that apply for the operation of the machine in your country. Keep the operating instructions package with the machine at all times and store it in a plastic cover to protect it from dirt and moisture. Read the instruction manual each time before operating the machine and carefully follow its information. The machine can only be operated by persons who were instructed concerning the operation of the machine and who are informed about the associated dangers. The minimum age requirement must be complied with.

In addition to the safety notices contained in this operating manual and the particular instructions for your country, the generally recognised technical regulations for the operation of identical devices must be complied with.

2. Device description (fig. 1-3)

1. Engine
2. Fuel tank
3. Air filter / carburettor cover
4. Transmission
5. Idle setting
6. Drive shaft
7. Drill
8. Spark plug cover
9. Choke
10. Handle
11. Stop switch
12. Transmission lubricating nipple
13. Gas regulating lever
14. Locking lever
15. Tank cover
16. Fuel pump

3. Scope of delivery

Motor casing with handle

Art. no. 5904702903: Auger Ø 100 mm

Art. no. 5904702904: Auger Ø 100, 150, 200 mm

Petrol mixing container

Accessories kit

Spark plug spanner

Spanner 8/10 mm

Hexagonal spanner 4/5 mm

Operating instructions

- Open the packaging and remove the device carefully.
- Remove the packaging material as well as the packaging and transport bracing (if available).
- Check that the delivery is complete.
- Check the device and accessory parts for transport damage.
- If possible, store the packaging until the warranty period has expired.

⚠ Attention!

The device and packaging materials are not toys! Children must not be allowed to play with plastic bags, film and small parts! There is a risk of swallowing and suffocation!

4. Intended use

The machine complies with the relevant EC Machine Guideline.

- Before starting any work, all protective and safety devices must be in place on the earth auger.
- The earth auger has been designed to be operated by one person.

- The earth auger has been designed for excavating planting holes, for pergolas and fences in light soil. It has only limited use on ground that is hard and stony and has many roots.
- The operator is responsible for third parties in the area of operations.
- All safety and hazard notices on the machine must be observed.
- All safety and hazard notices on the machine must be kept in a completely legible condition.
- Use the machine in a technically flawless condition only, as well as for its intended purpose, in a safe manner and being aware of dangers, in compliance with the operating instructions!
- Disruptions which can affect safety in particular must be eliminated straight away!
- The manufacturer's stipulations concerning safety, work and maintenance as well as the measurements specified in Technical Data, must be complied with.
- The relevant accident prevention stipulations and other widely recognised safety rules must be observed.
- The machine may only be used, maintained or repaired by people who are familiar with it and its dangers. Unauthorised changes to the machine negate the manufacturer's liability for damages resulting from this.
- The machine may only be used for work for which it has been built and which is described in the operating manual.
- The machine may only be used with the manufacturer's original accessories and original tools.

The equipment is allowed to be used only for its prescribed purpose. Any other use is deemed to be a case of misuse. The user/operator and not the manufacturer will be liable for any damage or injuries of any kind resulting from such misuse.

Please note that our equipment has not been designed for use in commercial, trade or industrial applications. Our warranty will be voided if the equipment is used in commercial, trade or industrial businesses or for equivalent purposes.

Remaining risks:

The machine has been built according to the latest technology and recognised safety rules. However, there is still a chance of residual risks whilst working. Furthermore, despite all measures taken, remaining risks can occur that are not obvious.

Remaining risks can be minimised by complying with the „Safety notices“ and the „Intended use“ as well as the operating instructions overall.

5. Safety information

⚠ Caution!

Read all safety regulations and instructions. Any errors made in following the safety regulations and instructions may result in an electric shock, fire and/or serious injury. Keep all safety regulations and instructions in a safe place for future use.

Please note

- Read the manual before commissioning
- Use hearing protection, safety goggles and a hard hat
- Use safety gloves
- Wear safety boots
- Removing or changing protective devices and guards is prohibited
- Smoking is prohibited in the working environment
- Do not touch rotating parts
- Do not touch hot parts
- Keep third parties away from the working environment
- Do not use the machine in a wet environment
- Risk from ejected objects
- Warning: electric current
- Caution: do not run the machine in a closed area; fumes will accumulate
- Petrol is flammable and explosive
- Keep motor away from heat and sparks

Hazards and safety measures

- Human behaviour, misbehaviour. Always concentrate fully when working.
- Wrapping around and entangling of work clothes.
 - The auger drill can catch clothes, string or wire and draw them in.
 - Wear tight-fitting clothing and safety boots with a non-slip sole and steel toe caps.
 - Wear long hair in a hair net.
 - Warning! In the event of unseen foreign objects.
- Recoil by the auger drill
 - If the ground is stony, hard or has many roots, strong recoil may occur at the handles.
 - Avoid working with this machine on ground that is stony, hard or has many roots.
 - Warning! Hold on to handles tightly, wear protective clothing.
- Burns
 - Touching the exhaust/casing can lead to burns.
 - Warning! Leave the power tool to cool down. Wear work gloves.
- Contact, inhalation
 - The fumes from the machine can damage your health. Only ever use the machine outside
 - Warning! Take a break
- Electrical contact
 - Touching the spark plug cap can lead to an electric shock when the motor is running.

- Warning! Never touch the spark plug connector or the spark plug when the motor is running.
- Hearing damage
 - Long-term unprotected work with the earth auger can cause hearing damage.
 - Warning! Always use hearing protection.
- Fire, explosion
 - The machine's fuel mix is flammable.
 - Warning! Smoking and open fires are prohibited during work and refuelling.
- People slipping, tripping or falling
 - On unstable ground, you can be injured if you trip.
 - Warning! Be aware of obstacles in the working environment. Always ensure a safe standing position and wear non-slip shoes.
- Ejected roots, rocks or other foreign objects
 - During drilling, ejected rocks or pieces of wood can injure people and animals.
 - Warning! Ensure that neither people nor animals are present in the hazardous area and that you wear appropriate safety clothing as well as eye and hearing protection.
- Pass on the safety notices to everyone working with the machine. Staff commissioned to work with the machine must read the operating manual before starting work and, in particular, the chapter „Safety notices“. It is too late during work. This particularly applies to staff only occasionally working with the machine, such as during set-up or maintenance. All safety and hazard notices on the machine must be observed.
- All safety and hazard notices on the machine must be kept in a completely legible condition.
- Be aware of environmental conditions at the work place.
- Ensure sufficient lighting at and around the machine.
- Never work in closed or badly-ventilated rooms.
- When the motor is running, be aware of fumes. These may be odourless and invisible.
- When the weather is bad, the ground is uneven or in the event of slopes, ensure secure footing.
- When working with the machine, all protective devices and covers must be attached.
- Keep people, especially children, away from the working environment.
- Prevent unauthorised people from coming in contact with the machine.
- Ensure that children do not have access to the machine when it is not in use.
- Always pay attention and concentrate on what you are doing. Be sensible at work. Do not use the power tool when you are not concentrating.
- Do not work with the machine when you are tired or under the influence of alcohol, drugs or medication.
- The operator must be at least 18 years old. Apprentices have to be at least 16 years old and may only work with the machine under supervision.

- People working with the machine must not be distracted.
- Store the machine safely so that nobody can get injured by the machine or put it into operation.
- Only ever use the machine according to its intended purpose.
- Do not use power tools where there is a risk of fire or explosions.
- Wear appropriate work clothing that does not hinder your work.
- During work, wear hearing protection and goggles.
- Wear safety boots with steel toe caps, steel soles and a non-slip profile.
- Wear tough work gloves.
- The machine's safety devices must not be removed or made unusable.
- Carry out work such as retooling, adjusting, measuring and cleaning only when the motor is switched off.
- Installations, repairs and maintenance must be carried out by specialists.
- All protective and safety equipment must be re-attached immediately after completing repairs and maintenance.
- Always turn off the motor before fixing faults.
- Look out for damaged parts and protective devices.
- Faulty parts must be repaired or replaced by an authorised specialist.
- Only ever use original spare parts. Using spare parts that are not original can be a risk for people or cause material damage.
- The machine may only be used for its intended purpose. The user alone is responsible for unintended use of the machine. The manufacturer is not liable in the event of unintended use.

Safety notices for petrol-powered machines

- Internal combustion engines are a particular danger during operation and refuelling.
- Always observe warning notices and additionally specified safety instructions.
- Non-compliance can lead to severe and even lethal injuries.
- When the motor is running, be aware of fumes. These may be odourless and invisible. The motor fumes contain toxic carbon monoxide. Being in an environment with carbon monoxide can lead to unconsciousness and death.
- Never operate the machine close to an open flame.
- Do not smoke during refuelling.
- Do not spill fuel during refuelling.
- Always close the tank filler cap properly after refuelling.
- Do not touch the exhaust when the motor is running (risk of burning).
- Do not touch the spark plug cap when the motor is running (electric shock).

- Leave the machine to cool down before carrying out modifications or repairs and always remove the spark plug cap.
- Do not use petrol or solvents for cleaning. Risk of explosion!

Refuelling:

Note: Two-stroke motor, mixing ratio 1:40

FOLLOW THE SAFETY PRECAUTIONS!

Be careful and cautious when handling fuels.

- The engine must be switched off!
- Thoroughly clean the area around the caps, to prevent dirt from getting into the fuel or oil tank.
- Unscrew the cap and fill the tank with fuel (fuel/oil mixture) or chain oil as the case may be. Fill up to the bottom edge of the filler neck.
- Be careful not to spill fuel or chain oil!
- Tighten the tank cap as far as it will go.
- After refuelling, clean the tank cap and surroundings and make sure the cap is sealed!

NOTE:

Always pre-mix the intended oil volume in half of the fuel volume to produce the fuel/oil mixture and then add the remaining fuel volume. Shake the finished mixture well before filling the mixture into the auger.

It is not wise to add more engine oil than specified to ensure safe operation. This will only result in a higher production of combustion residues which will pollute the environment and clog the exhaust channel in the cylinder as well as the muffler. In addition, fuel consumption will rise and performance will decrease.

The storage of fuel

Fuels have a limited storage life. Fuel and fuel mixtures age through evaporation, especially at high temperatures. Aged fuel and fuel mixtures can cause starting problems and damage the engine. Purchase only that amount of fuel, which will be consumed over the next few months. At high temperatures, once fuel has been mixed it should be used up in 6-8 weeks.

Store fuel only in proper containers, in dry, cool, secure locations!

Avoid skin and eye contact!

Mineral oil products degrease your skin. If your skin comes in contact with these substances repeatedly and for an extended period of time, it will desiccate. Various skin diseases may result. In addition, allergic reactions are known to occur.

Eyes can be irritated by contact with oil. If oil comes into your eyes, immediately wash them with clear water. If your eyes are still irritated, see a doctor immediately!

Check fuel lines, fuel tank cap and fuel tank for leakages or tears.

Do not start the machine with such damage.

Do not refuel the machine when the motor is still hot or running.

Never refuel the machine close to an open flame.

Period of use:

Using the earth auger can lead to poor circulation in the fingers, hands or wrists. Symptoms such as pins and needles, pain, stinging and changes in the skin can occur.

If these symptoms occur, seek medical help.

Use appropriate gloves and take regular breaks.

Keep this safety information in a safe place.

6. Technical data

Dimensions without drill w x d x h mm	540 x 310 x 370
Motor design	1 cylinder/2-stroke
Max. motor performance kW	1,3
Displacement ccm	51,7
Idle speed r.p.m.	3000
max. speed r.p.m.	9600
Nominal speed auger r.p.m.	0-310
Vibration level at handle m/s ²	15,62
Fuel	Petrol 90 octane
Tank capacity l	1
Mixing ratio of 2-stroke motor oil/fuel	1:40
Weight kg	9,6

Subject to technical changes!

Sound pressure level L _{pA}	100,9 dB(A)
Uncertainty K _{pA}	3 dB
Sound power level L _{WA}	113 dB(A)
Uncertainty K _{WA}	3 dB

Limit the noise and vibration to a minimum!

- Only use appliances which are in perfect working order.
- Service and clean the appliance regularly.
- Adapt your working style to suit the appliance.
- Do not overload the appliance.
- Have the appliance serviced whenever necessary.
- Switch the appliance off when it is not in use.
- Wear protective gloves.

7. Before operation

Assembly

For packaging reasons, your machine has not been assembled completely.

Inserting the earth auger, fig. 2

- Place the motor casing on a work bench. Place the earth auger (7) on the drive shaft (6), ensuring that both holes are aligned.
- Insert the driving pin (A).
- Secure with split pin (B) and slightly bend it.

Fuelling fig. 1

- Open the fuel tank cap (15).
- Pour in the fuel mixture using a funnel.
- Do not fill the tank completely as fuel expands.
- Close the fuel tank cap (15) tightly and clean the area from possibly spilled fuel mixture.

Fuel mixture

The auger's motor is a two-stroke motor. It is driven by a 1:40 fuel mixture made up of two-stroke oil and fuel. The fuel requires unleaded ordinary petrol with a research octane count of at least 91. Lubrication of the motor takes place by adding premium two-stroke oil.



Do not mix the fuel mixture in the fuel tank. Use the mixing container supplied or another appropriate container. Only pour the fuel mixture into the fuel tank after previously mixing and stirring it well.

- Use fresh, clean fuel. Water and contaminants in the petrol damage the fuel system.
- Refuel in a well-ventilated area with the motor not running. If the motor was in use directly prior to refuelling, leave it to cool down first. Never refuel the machine in a building where the petrol fumes can reach flames or sparks.
- Petrol is highly flammable and explosive. When handling fuel, you may suffer burns or other severe injuries.
- Turn off the motor and keep away from heat, sparks and flames.
- Only ever refuel outside.
- Wipe up spilled petrol straight away.

Starter cord (fig. 1)

Pulling the cord (9) starts the motor.

Choke lever (fig. 3)

The choke lever (C) closes and opens the choke in the carburettor. In the  position, the air-petrol-mixture is enriched for the motor's cold start. The  position is used for the operation of the motor and for a warm start.

Idle setting screw (fig. 3)

Using screw (D), the auger's idling mixture can be adjusted. If the idling mixture is a little too high (the boring head turn by itself in idle mode), the idling mixture can be reduced by slowly turning the screw anti-clockwise.

Warning! Other work on the carburettor must be carried out by a specialist.

8. Operation

Before commissioning, it is important that you **know and follow the safety notices**.

For all work on the earth auger, you must turn off the motor, disconnect the spark plug connector and wear safety gloves. Start the auger only after complete assembly and checking it.



WARNING! Carefully read the safety notices (see „Safety notices“ and additional notices for petrol-powered machines).

Warning! Wear safety boots and tight-fitting clothes in order to prevent injuries.


Before commissioning, it is important that you know and follow the safety notices

- Observe national stipulations during work when using the auger on public property or paths.
- Keep adults, children and animals away from the hazardous area.
- Check the working environment for foreign bodies and remove them.
- When leaving the machine, the motor must always be turned off.
- Check the earth auger for correct functioning and its safe operating condition.
- Do not work by yourself, someone has to be close in case of emergencies.
- Hold on to the earth auger with both hands when working.
- Ensure you have a safe position, during the drilling process as well.
- Do not lean too far forwards when working.
- Check for a flawless idling mode. The auger must not rotate in idling mode when the motor is warm.
- Immediately turn off the motor when you can feel changes to the machine's behaviour.
- Do not place the hot auger in dry grass or on flammable objects (fire risk!).
- Drill the hole in the ground in several sections so you can remove the soil in between.
- Keep the auger vertical, do not twist it!
- Always secure bore holes, otherwise there is a risk of injury!
- Exclusively drill holes in soil with the earth auger.
- Other applications are not permitted.

Starting the motor: (fig. 3)

- If the motor is cold, turn the choke lever (C) to the  position.
- If the motor is warm, turn the choke lever (C) to the  position.
- Prime the fuel pump (16) by pressing it several times until you can see fuel in the pump.
- Put the stop switch (11) in the „start“ position.
- Lightly pull on the starter cord (9) until you can feel resistance, then pull on the cord strongly 2-3 times until the motor fires briefly.

CAUTION! Do not pull out the starter cable more than approx. 50 cm, and lead it back by hand. For efficient starting, it is important to pull the starter cable quickly and powerfully.

- Turn the choke lever (C) to  position.
- Pull the starter cord 2-3 times again until the motor fires and runs in idle mode.
- Warning! The earth auger only begins to rotate when the throttle lever is used.

Stop the engine

Press the stop switch (11) in the 'Stop' position. When restarting, first press the stop switch (11) back to the 'Start' position.

Before starting the motor, check the following:

- Fuel level - the fuel tank should be at least half full
- Condition of the fuel lines
- Outer screw couplings for tight fit
- The earth auger has to be able to run freely

Operating

- Set the auger down and actuate the throttle control lever (13).
- Adjust the power according to the ground conditions in order to be able to proceed ideally.
- If the ground condition is ideal, permitting a steady work speed, using the adjusting screw, you can lock the throttle control lever (13) (in the centre position) in order to make your work easier.

When leaving the auger, the motor must always be turned off.

9. Cleaning and maintenance

Cleaning

- We recommend that you clean the device immediately each time you have finished using it.
- Clean the equipment regularly with a moist cloth and some soft soap. Do not use cleaning agents or solvents; these could attack the plastic parts of the equipment. Ensure that no water can seep into the device.

Maintenance

For all work on the machine, the spark plug cap and the spark plug have to be removed (high voltage). Please adhere to the maintenance schedule.

Daily before beginning work

Check fuel tank and fuel lines for tightness. Check mounting parts, exhaust cover, air filter cover, oil, position of the auger and functioning of the operating elements.

After 20 operating hours

Clean air filter and check spark plug

After 100 operating hours

Clean fuel tank and replace spark plug

After 300 operating hours

Replace air filter

Important notice in the event of repairs:

When sending earth augers to be repaired, please note that, for safety reasons, they must be delivered to the service station free from oil and petrol.

Warning! No smoking and no open fire.

Risk of explosion.

Air filter, fig. 4-5

Regular cleaning of the air filter prevents carburettor malfunctions.

Cleaning the air filter and replacing the air filter insert:

- Loosen the screw (E) on the air filter casing (3), remove the air filter cover and check it.
- Replace the damaged element.
- Clean dirt from the inside of the filter casing with a clean, damp cloth.
- Carefully remove the foam filter insert (F) and check it for damage, replace if required.
- Clean the foam filter insert (F) in warm water and with a mild soap solution. Thoroughly rinse it with clear water and leave it to dry.

Warning!

Do not use petrol or cleanser.

Risk of explosion.

- Return the foam filter insert (F) and reposition the air filter casing.

Do not run the motor without an air filter insert or when it is damaged. This can cause motor damage.

In this case: The manufacturer is not liable for damage resulting from this; the risk lies exclusively with the user.

Spark plug fig. 6-7

The exhaust/casing becomes very hot during operation. Wait for the motor to cool down.

NEVER touch the hot motor.

- Remove the spark plug cover (8) by removing the screw (G) with the provided key.
- Remove the spark plug cap (H).
- Remove the spark plug (I) and check it.
- Check the insulator. In case of damage such as cracks or chips: Replace the spark plug (I).
- Clean the spark plug electrodes with a wire brush.
- Check the electrodes' gap and adjust it. Gap 0.75 mm.
- Return the spark plug (I) and tighten it with the spark plug spanner.
- Replace the spark plug cap (H) on the spark plug (I).
- Re-install the spark plug cover (8)

Ensure that no dirt gets into the cylinder head during replacement.

Check the position of the spark plug (I).

- A loose spark plug (I) can damage the motor by overheating.
- Tightening it too much can damage the thread in the cylinder head.

The manufacturer is not liable for damage resulting from this, the risk lies exclusively with the user.

Replacing the fuel filter fig. 8

The felt filter (J) of the fuel filter can become clogged. It is recommended to replace the fuel filter once every three months in order to ensure unimpeded fuel flow to the carburetor.

To remove the fuel filter for replacement, pull it out through the tank filler neck using a piece of wire bent at one end to form a hook.

Service information

Please note that the following parts of this product are subject to normal or natural wear and that the following parts are therefore also required for use as consumables.

Wear parts*: spark plug, drill

* Not necessarily included in the scope of delivery!

10. Storage/Transport

Transport

Leave the motor to cool down before transporting the machine or storing it indoors in order to prevent burning and fire hazards.

Turn off the motor even for short distances when changing locations during work.

Carry the auger exclusively by the handle. Do not touch the casing (risk of burning).

When transporting the auger in a vehicle, it must be stored safely.

The fuel tank (2) must be emptied completely before transport.

Storage

Never store an auger for longer than 30 days without carrying out the following steps.

Follow the cleaning instructions and maintenance instructions before storing the device!

Storing the auger

If you store an auger for longer than 30 days, it must be prepared ahead of time. Unless the storage instructions are followed, fuel remaining in the carburetor will evaporate, leaving gum-like deposits. This could lead to difficult starting and result in costly repairs.

- Remove the fuel tank cap slowly to release any pressure in tank. Carefully drain the fuel tank.
- Start the engine and let it run until the engine stops in order to remove the fuel from the carburetor.
- Allow the engine to cool (approx. 5 minutes).
- Remove the spark plug.
- Pour 1 teaspoon of clean 2-cycle oil into the combustion chamber. Pull starter rope slowly several times to coat internal components. Replace spark plug.
- Store the auger in a dry location, far away from potential sources of ignition, such as furnaces, hot water boilers with gas, gas dryers, etc.

Recommissioning the auger

- Remove spark plug.
- Pull starter rope briskly to clear excess oil from combustion chamber.
- Clean the spark plug and check that the electrode gap is correct.
- Prepare unit for operation.
- Fill fuel tank with proper fuel / oil mixture.

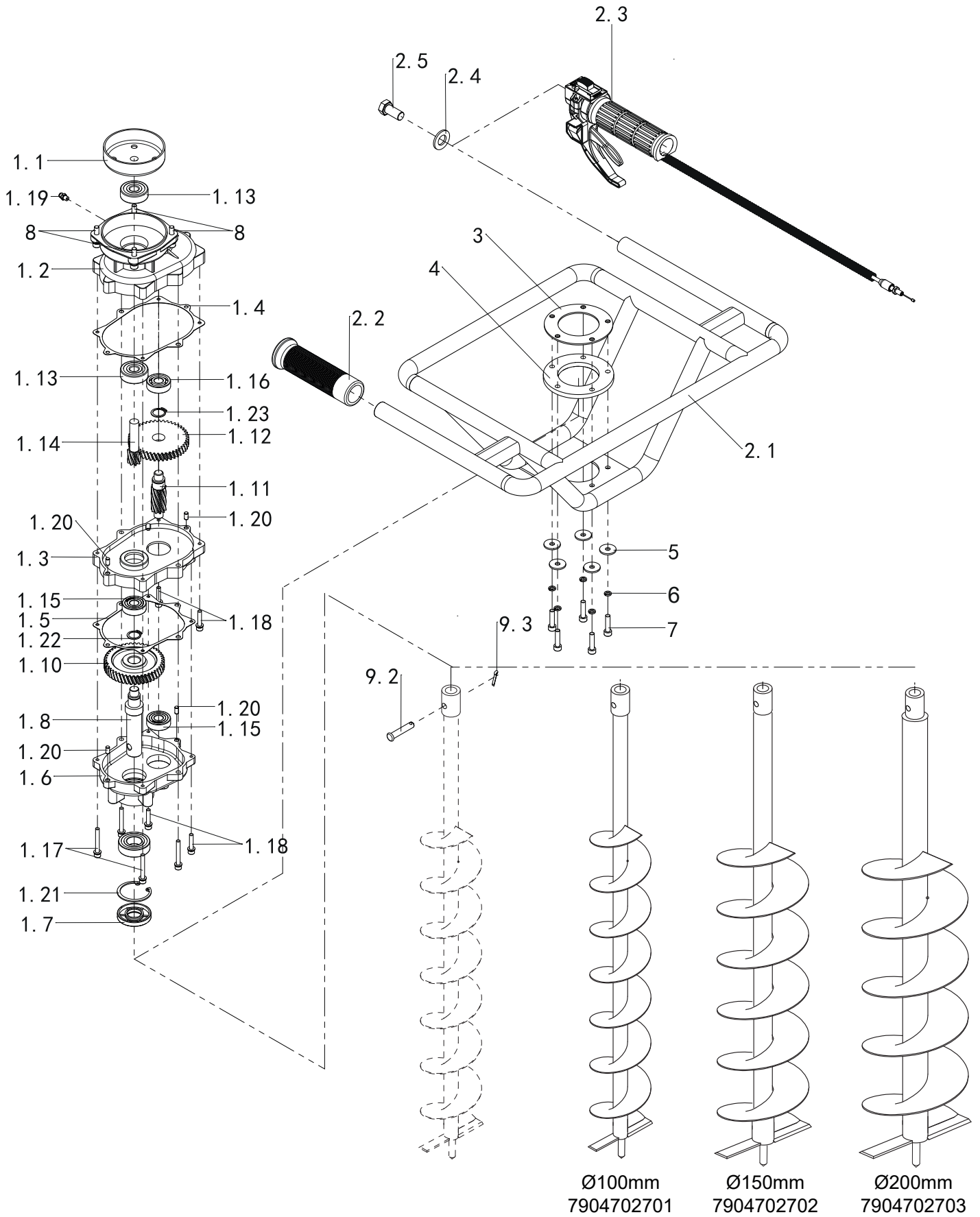
11. Disposal and recycling

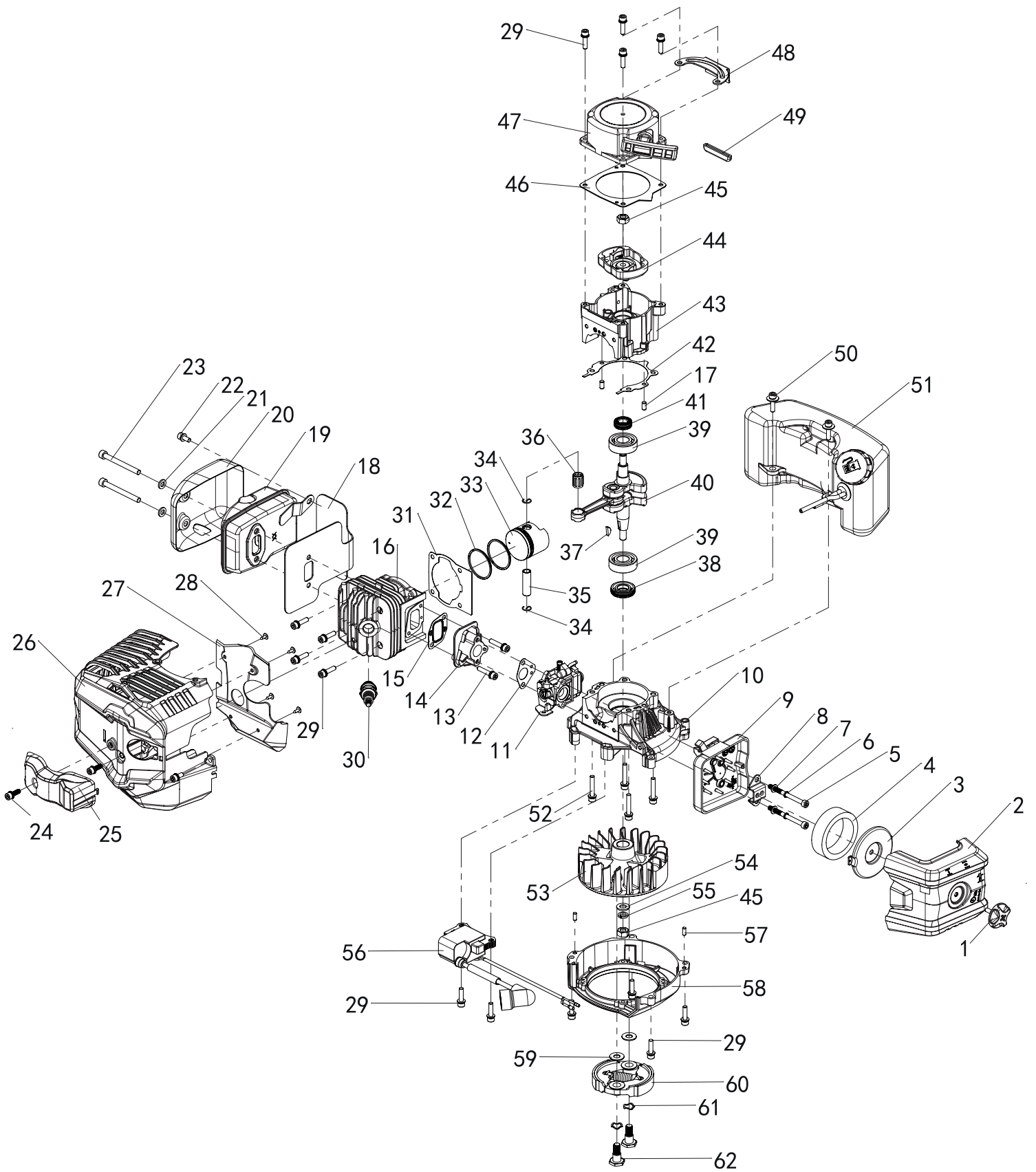
The equipment is supplied in packaging to prevent it from being damaged in transit. The raw materials in this packaging can be reused or recycled. The equipment and its accessories are made of various types of material, such as metal and plastic. Defective components must be disposed of as special waste. Ask your dealer or your local council.

12. Troubleshooting

Problem	Possible Cause	Action
Motor does not start	<ol style="list-style-type: none"> 1. Spark plug cable is loose 2. No fuel or old fuel 3. Throttle lever not in the correct position 4. Choke not in „ON“ position 5. Blocked fuel line 6. Dirty spark plug 7. Motor is wet 	<ol style="list-style-type: none"> 1. Fix the spark plug cable securely on the spark plug 2. Refuel with clean, fresh fuel 3. Push the throttle lever into the starting position 4. During a cold start, the throttle has to rest against the choke 5. Clean the fuel line 6. Clean it, adjust gap or replace spark plug 7. Wait a few minutes before starting it again
Motor does not run smoothly	<ol style="list-style-type: none"> 1. Spark plug cable is loose 2. The machine is running on the CHOKE 3. Blocked fuel line or stale fuel 4. Ventilation is blocked 5. Water or dirt in the fuel system 6. Dirty air filter 	<ol style="list-style-type: none"> 1. Connect the spark plug cable tightly 2. Push the choke lever to „OFF“ 3. Clean the fuel line Fill the tank with fresh, clean fuel 4. Clean the ventilation 5. Empty the fuel tank Refuel with fresh fuel 6. Clean the air filter or replace it
Motor has overheated	<ol style="list-style-type: none"> 1. Too little oil in the motor 2. Dirty air filter 3. Air flow restricted 	<ol style="list-style-type: none"> 1. Fill the fuel tank with the correct fuel mixture 2. Clean the air filter or replace it 3. Remove the ventilation casing and clean it
Motor does not stop when the throttle is on STOP, or the speed does not increase when the throttle is adjusted	Dirt on the throttle	Remove the dirt

If these actions do not remove the fault, or faults occur that are not mentioned here, have your machine checked by an expert.







EARTH AUGER

Warranty Details

The product is guaranteed to be free from defects in workmanship and parts for a period of 12 months from the date of purchase. Defects that occur within this warranty period, under normal use and care, will be repaired, replaced or refunded at our discretion. The benefits conferred by this warranty are in addition to all rights and remedies in respect of the product that the consumer has under the Competition and Consumer Act 2010 and similar state and territory laws.

Our goods come with guarantees that cannot be excluded under the Australian Consumer Law. You are entitled to a replacement or refund for a major failure and for compensation for any other reasonably foreseeable loss or damage. You are also entitled to have the goods repaired or replaced if the goods fail to be of acceptable quality and the failure does not amount to a major failure.

AFTER SALES SUPPORT

 1300 855 831

 support@scheppach.com.au

AU Hotline Costs: Local rate for landline calls*

*Charges may vary dependent upon network operator or mobile network provider.





EARTH AUGER

Repair and Refurbished Goods or Parts Notice

Unfortunately, from time to time, faulty products are manufactured which need to be returned to the Supplier for repair.

Please be aware that if your product is capable of retaining user-generated data (such as files stored on a computer hard drive, telephone numbers stored on a mobile telephone, songs stored on a portable media player, games saved on a games console or files stored on a USB memory stick) during the process of repair, some or all of your stored data may be lost.

We recommend you save this data elsewhere prior to sending the product for repair.

You should also be aware that rather than repairing goods, we may replace them with refurbished goods of the same type or use refurbished parts in the repair process.

Please be assured though, refurbished parts or replacements are only used where they meet Scheppach's stringent quality specifications.

If at any time you feel your repair is being handled unsatisfactorily, you may escalate your complaint. Please telephone us on "1300 855 831" or write to us at:

RossMac Pty. Ltd.

P.O. Box 261, Essendon North, Victoria, 3041

Telephone: 1300 855 831 (Monday - Friday 8:30am-6:00pm)

Email: support@scheppach.com.au

AFTER SALES SUPPORT

 1300 855 831

 support@scheppach.com.au

AU Hotline Costs: Local rate for landline calls*

*Charges may vary dependent upon network operator or mobile network provider.



