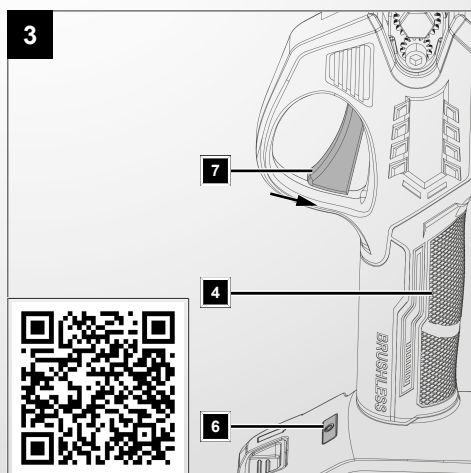
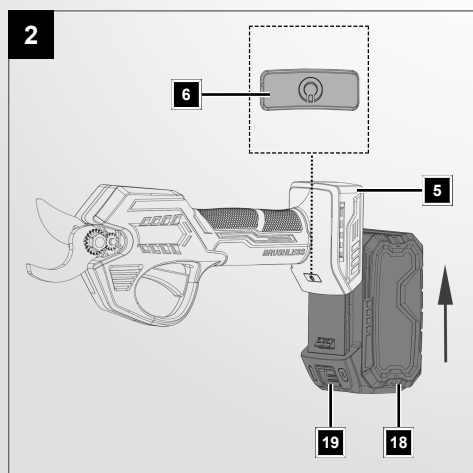
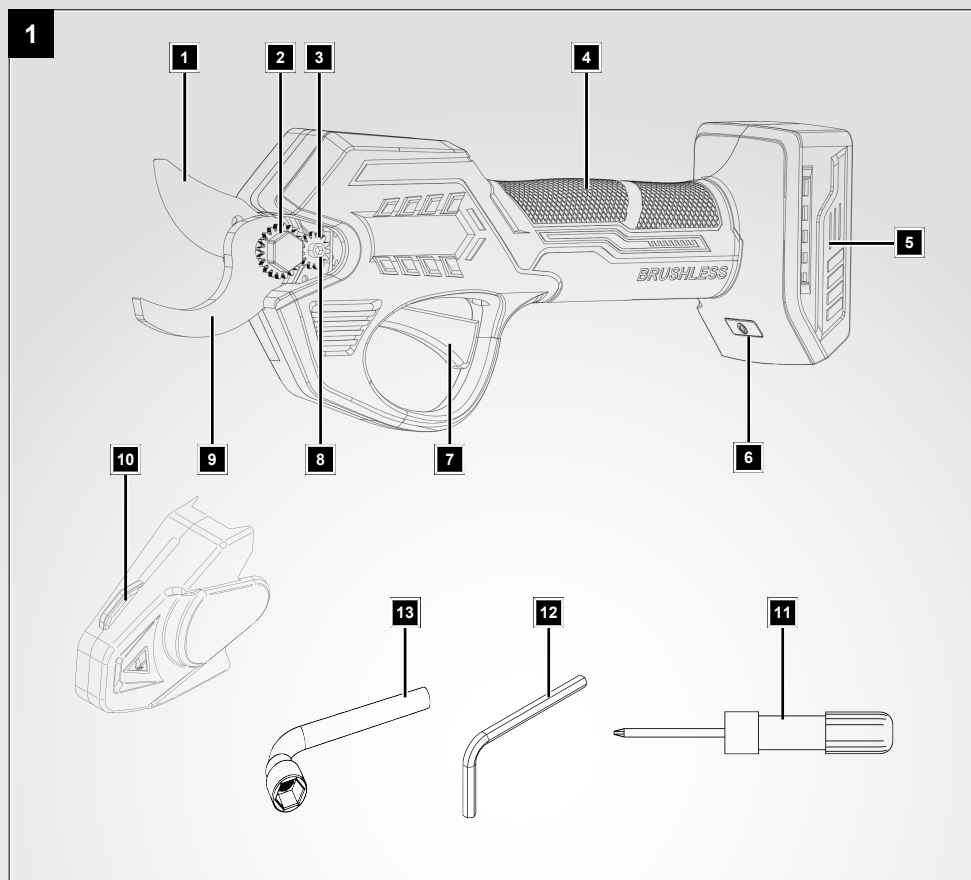


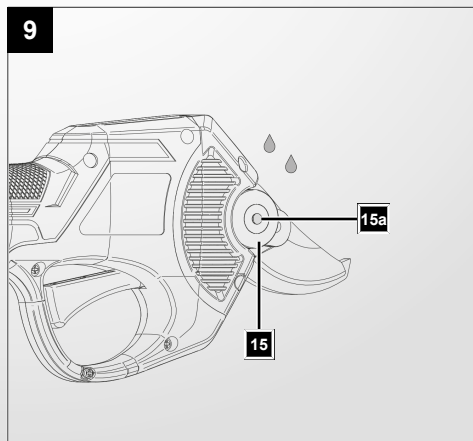
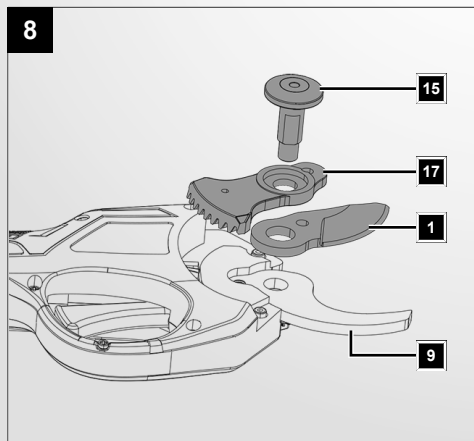
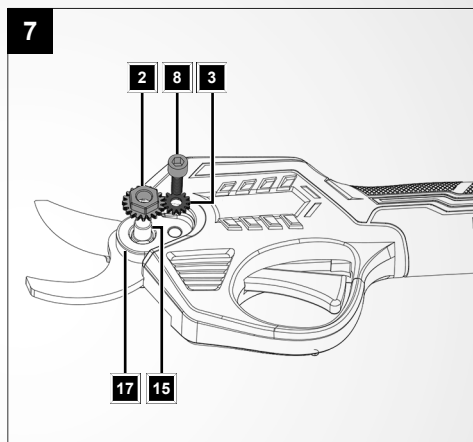
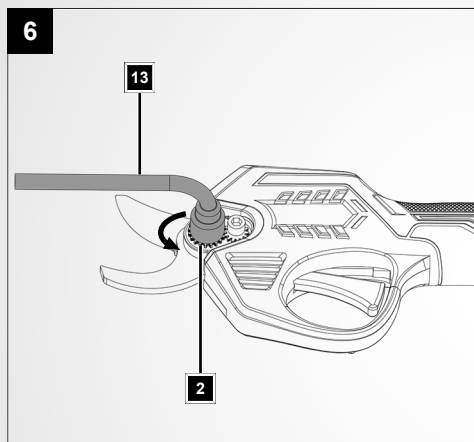
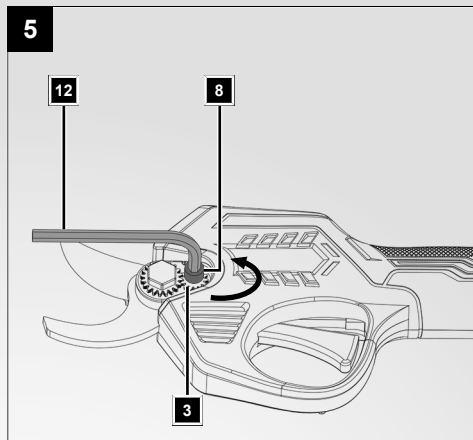
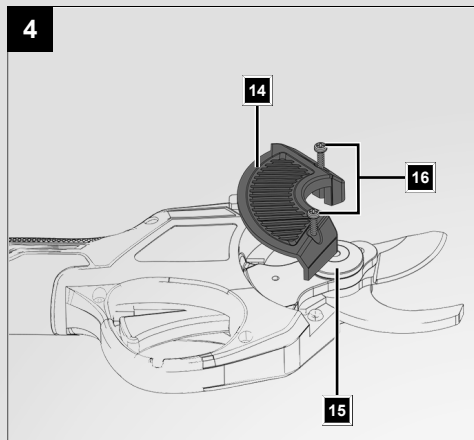
Translation of the original operating
instructions

FERREX[®]

20V PRUNER SHEARS F-PRS28







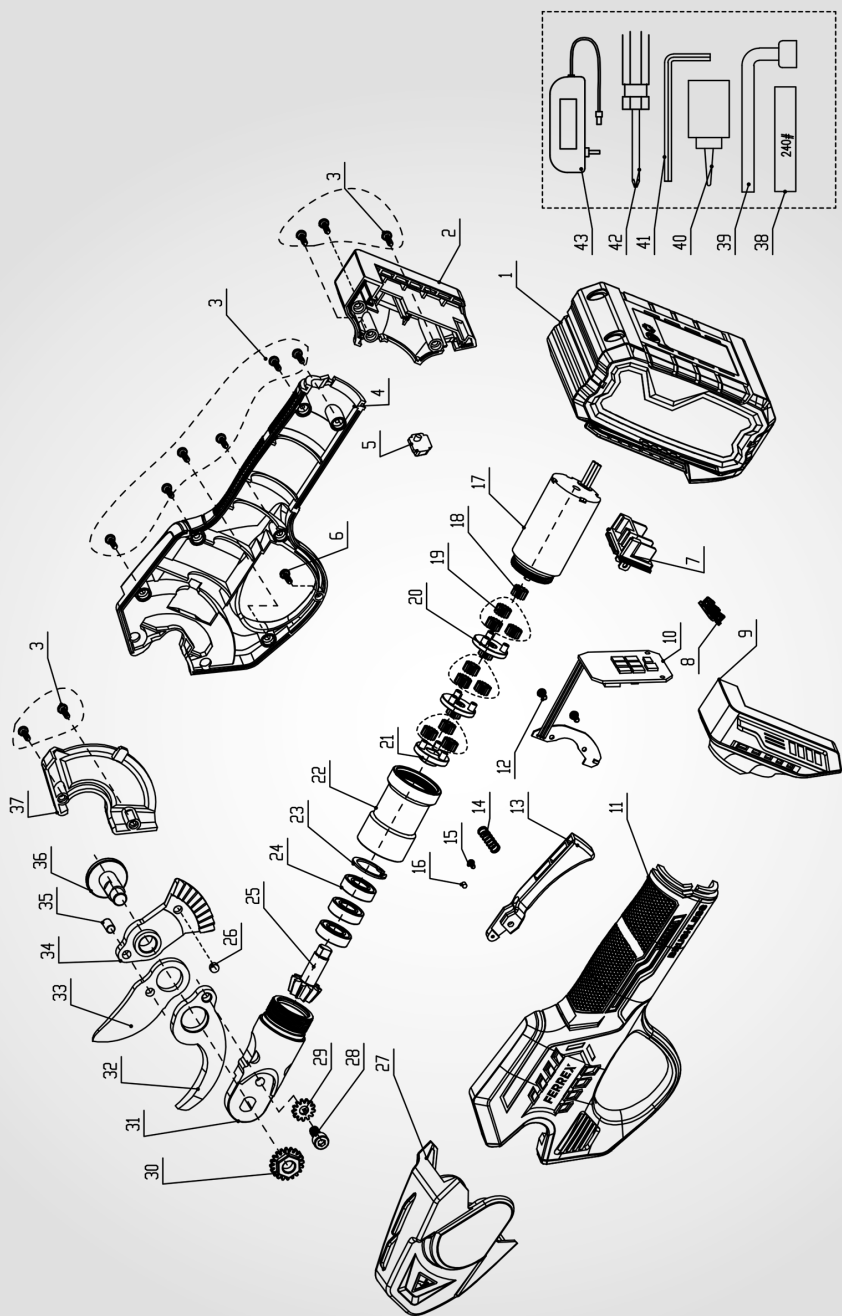







Table of contents

1. Introduction	8
2. Product description (Fig. 1-9a)	8
3. Scope of delivery (Fig. 1)	9
4. Proper use	9
5. Safety instructions.....	11
6. Technical data	16
7. Unpacking	17
8. Operation.....	18
9. Working instructions	21
10. Cleaning and maintenance	22
11. Transport (Fig. 1)	24
12. Storage	24
13. Repair & ordering spare parts	24
14. Troubleshooting.....	25
15. Warranty Details	27
16. Repair and Refurbished Goods or Parts Notice	28

Explanation of the symbols on the product

Symbols are used in this manual to draw your attention to potential hazards. The safety symbols and the accompanying explanations must be fully understood. The warnings themselves will not rectify a hazard and cannot replace proper accident prevention measures.

	Before commissioning, read and observe the operating manual and safety instructions!
	Wear safety goggles.
	Attention! Risk of injury from running blades.
	Do not expose the product to rain. The product may only be stationed, stored and operated in dry ambient conditions.
	Lithium-ion battery
	Regulatory Compliance Mark
	Warranty class
	Dispose of batteries according to local regulations.
	5 years warranty

1. Introduction

Manufacturer:

Scheppach GmbH
Günzburger Straße 69
D-89335 Ichenhausen

Dear Customer

We hope your new product brings you much enjoyment and success.

Note:

In accordance with the applicable product liability laws, the manufacturer of this product assumes no liability for damage to the product or caused by the product arising from:

- Improper handling
- Non-compliance with the operating manual
- Repairs carried out by third parties, unauthorised specialists
- Installing and replacing non-original spare parts
- Improper use
- Failures of the electrical system in the event of the electrical regulations and VDE provisions 0100, DIN 57113 / VDE0113 not being observed.

Note:

The operating manual is part of this product.

It includes important instructions for the safe, proper and economic operation of the product, for avoiding danger, for minimising repair costs and downtimes and for increasing the reliability and extending the service life of the product. In addition to the safety instructions in this operating manual, you must also observe the regulations applicable to the operation of the product in your country.

Familiarise yourself with all operating and safety instructions before using the product. Only operate the product as described and for the specified areas of application. Keep the operating manual in a good place and hand over all documents when passing the product on to third parties.

2. Product description (Fig. 1-9a)

1. Cutting blade (movable)
2. Sprocket nut
3. Sprocket washer
4. Handle

- 5. Battery mount
- 6. On/off switch
- 7. Start lever
- 8. Allen screw
- 9. Cutting blade (fixed)
- 10. Blade protector
- 11. Phillips screwdriver
- 12. Allen key, 4mm
- 13. Socket spanner SW13
- 14. Cover
- 15. Stud bolt
- 15a. Grease nipple
- 16. Phillips screw
- 17. Blade insert
- 18. Battery*
- 19. Release button (battery)

* = may not be included in the scope of delivery!

3. Scope of delivery (Fig. 1)

Item	Quantity	Designation
10.	1 x	Blade protector
11.	1 x	Phillips screwdriver
12.	1 x	Allen key, 4 mm
13.	1 x	Socket spanner SW13
	1 x	Cordless pruning shears
	1 x	Operating manual

4. Proper use

The product is intended for cutting branches with a thickness of up to 28 mm in soft wood and 15 mm in hard wood.

The product may only be used in the intended manner. Any use beyond this is improper. The user/operator, not the manufacturer, is responsible for damages or injuries of any type resulting from this.

An element of the intended use is also the observance of the safety instructions, as well as the assembly instructions and operating information in the operating manual.

Persons who operate and maintain the product must be familiar with the manual and must be informed about potential dangers.




The liability of the manufacturer and resulting damages are excluded in the event of modifications of the product.

The product may only be operated with original parts and original accessories from the manufacturer.

The safety, operating and maintenance specifications of the manufacturer, as well as the dimensions specified in the technical data, must be observed.

Please note that our products were not designed with the intention of use for commercial or industrial purposes. We assume no guarantee if the product is used in commercial or industrial applications, or for equivalent work.

Explanation of the signal words in the operating manual

 DANGER
Signal word to indicate an imminently hazardous situation which, if not avoided, will result in death or serious injury.
 WARNING
Signal word to indicate a potentially hazardous situation which, if not avoided, could result in death or serious injury.
 CAUTION
Signal word to indicate a potentially hazardous situation which, if not avoided, could result in minor or moderate injury.
ATTENTION
Signal word to indicate a potentially hazardous situation which, if not avoided, could result in product or property damage.

5. Safety instructions

WARNING

Read all safety warnings, instructions, illustrations and specifications provided with this power tool.

Failure to follow all instructions listed below may result in electric shock, fire and/or serious injury.

Save all warnings and instructions for future reference.

The term “power tool” in the warnings refers to your mains-operated (corded) power tool or battery-operated (cordless) power tool.

1) Work area safety

- a) **Keep your work area clean and well-lit.** Cluttered or dark areas invite accidents.
- b) **Do not operate power tools in explosive atmospheres, such as in the presence of flammable liquids, gases or dust.** Power tools create sparks which may ignite the dust or fumes.
- c) **Keep children and bystanders away while operating a power tool.** Distractions can cause you to lose control.

2) Electrical safety

- a) **The connection plug of the electric tool must fit into the socket. Never modify the plug in any way. Do not use any adapter plugs with earthed (grounded) power tools.** Unmodified plugs and matching outlets will reduce risk of electric shock.
- b) **Avoid body contact with earthed or grounded surfaces, such as pipes, radiators, ranges and refrigerators.** There is an increased risk of electric shock if your body is earthed or grounded.
- c) **Do not expose power tools to rain or wet conditions.** Water entering a power tool will increase the risk of electric shock.
- d) **Do not abuse the cord. Never use the cord for carrying, pulling or unplugging the power tool. Keep cord away from heat, oil, sharp edges or moving parts.** Damaged or entangled cords increase the risk of electric shock.
- e) **When operating a power tool outdoors, use an extension cord suitable for outdoor use.** Use of a cord suitable for outdoor use reduces the risk of electric shock.

- f) **If operating a power tool in a damp location is unavoidable, use a residual current device (RCD) protected supply.** Use of an RCD reduces the risk of electric shock.

3) Personal safety

- a) **Stay alert, watch what you are doing and use common sense when operating a power tool. Do not use a power tool while you are tired or under the influence of drugs, alcohol or medication.** A moment of inattention while operating power tools may result in serious personal injury.
- b) **Wear personal protective equipment and always safety goggles.** Protective equipment such as a dust mask, non-skid safety shoes, safety helmet or hearing protection used for appropriate conditions will reduce personal injuries.
- c) **Prevent unintentional starting. Ensure the switch is in the off-position before connecting to power source and/or rechargeable battery, picking up or carrying the tool.** Carrying power tools with your finger on the switch or energising power tools that have the switch on invites accidents.
- d) **Remove any adjusting tools or spanners/keys before turning the power tool on.** A wrench or a key left attached to a rotating part of the power tool may result in personal injury.
- e) **Avoid abnormal postures. Keep proper footing and balance at all times.** This enables better control of the power tool in unexpected situations.
- f) **Wear suitable clothing. Do not wear loose clothing or jewellery. Keep your hair and clothing away from moving parts.** Loose clothes, jewellery or long hair can be caught in moving parts.
- g) **If devices are provided for the connection of dust extraction and collection facilities, ensure these are connected and properly used.** Use of dust extraction can reduce dust-related hazards.
- h) **Do not let familiarity gained from frequent use of tools allow you to become complacent and ignore tool safety principles.** A careless action can cause severe injury within a fraction of a second.

4) Power tool use and care

- a) **Do not force the power tool. Use the correct power tool for your application.** The correct power tool will do the job better and safer at the rate for which it was designed.
- b) **Do not use the power tool if the switch does not turn it on and off.** Any power tool that cannot be controlled with the switch is dangerous and must be repaired.

- c) **Disconnect the plug from the power source and/or remove the battery pack, if detachable, from the power tool before making any adjustments, changing accessories, or storing power tools.** Such precautionary measures reduce the risk of starting the power tool accidentally.
- d) **Store idle power tools out of the reach of children and do not allow persons unfamiliar with the power tool or these instructions to operate the power tool.** Power tools are dangerous in the hands of untrained users.
- e) **Maintain power tools and attachments. Check for misalignment or binding of moving parts, breakage of parts and any other condition that may affect the power tool's operation. If damaged, have the power tool repaired before use.** Many accidents are caused by poorly maintained power tools.
- f) **Keep cutting tools sharp and clean.** Properly maintained cutting tools with sharp cutting edges are less likely to bind and are easier to control.
- g) **Use electric tools, insertion tools, etc. according to these instructions. Take into account the working conditions and the work to be performed.** Use of the power tool for operations different from those intended could result in a hazardous situation.
- h) **Keep handles and grasping surfaces dry, clean and free from oil and grease.** Slippery handles and grasping surfaces do not allow for safe handling and control of the tool in unexpected situations.

5) Battery tool use and care

- a) **Only charge the batteries with battery chargers recommended by the manufacturer.** A battery charger that is suitable for a particular type of battery poses a fire hazard when used with other batteries.
- b) **Only use the batteries in power tools that are designed for them.** The use of other batteries can lead to injuries and a risk of fire.
- c) **Keep the unused battery away from paper clips, coins, keys, nails, screws or other small metal objects that could cause a short-circuit between the contacts.** A short-circuit between the contacts of the battery could result in burns or fires.
- d) **Liquid may leak from the battery if used incorrectly. Avoid contact with it. In case of accidental contact, rinse with water. If the liquid gets into your eyes, seek additional medical attention.** Leaking battery fluid may cause skin irritation or burns.
- e) **Do not use a damaged or modified battery.** Damaged or modified batteries can behave unpredictably and cause fire, explosion or injury.
- f) **Do not expose a battery to fire or excessive temperatures.** Fire or temperatures above 130°C may cause an explosion.

- g) **Follow all charging instructions and never charge the battery or rechargeable tool outside the temperature range specified in the operating manual.** Incorrect charging or charging outside the approved temperature range can destroy the battery and increase the risk of fire.

6) Service

- a) **Only have your power tool repaired by qualified specialists and only with original spare parts.** This will ensure that the safety of the power tool is maintained.
- b) **Never attempt to service damaged batteries.** Any type of battery maintenance shall be carried out only by the manufacturer or an authorised customer service centre.

Additional safety instructions

1. Keep all body parts away from the cutting edges. Do not attempt to remove cuttings or hold material to be cut while the cutting edges are running. A moment of carelessness when using can result in serious injury.
2. Carry the product by the handle when the blade is stopped and ensure that you do not press any switch.
3. Always fit the blade guard when transporting or storing the product.
4. If removing jammed material or when performing maintenance work on the product, ensure that all mains switches are switched off and that the battery is removed or disconnected.
5. Only touch the product on the insulating handle surfaces, as the cutting edge can touch buried power cables.
6. Keep all mains cables and cables away from the cutting area.
7. Do not use the product in a thunderstorm - **Danger of lightning strike!**
8. Inspect the hedges and shrubs carefully, and remove all wire fences, hidden cables or other foreign objects.
9. Hold the product by the handle in one hand. Keep your second hand away from the cutting edge.
10. Use the product at ground level, not when standing on a ladder or in an unsafe, insecure position.
11. The product can be used by persons with reduced physical, sensory or mental capabilities or with a lack of experience or knowledge, if they are supervised or if they have been trained in the safe use of the product and understand the resultant hazards.

12. Never operate the product while other people, particularly children, or animals, are nearby.
13. Make sure that you have secure footing and always maintain your balance.
14. Always tread carefully and walk, never run or sprint when using the product.
15. Always wear sturdy footwear and long trousers when operating the product. Do not operate the product barefoot or in open sandals. Avoid wearing loose-fitting clothing or clothing with hanging strings or ties.
16. Disconnect the power supply (e.g. pull the mains plug out of the socket or remove the battery):
 - you are leaving the product.
 - If the product starts to produce unusual vibrations.
 - When you are not using the product.
 - the product has been in contact with foreign objects.

Residual risks

The product has been built according to state-of-the-art and the recognised technical safety rules. However, individual residual risks can arise during operation.

- Residual risks can be minimised if the "Safety Instructions" and the "Intended Use" together with the operating manual as a whole are observed.
- Use the product in the way that is recommended in this operating manual. This is how to ensure that your product provides optimum performance.
- Furthermore, despite all precautions having been met, some non-obvious residual risks may still remain.

WARNING

This power tool generates an electromagnetic field during operation. This field can impair active or passive medical implants under certain circumstances. In order to prevent the risk of serious or deadly injuries, we recommend that persons with medical implants consult with their physician and the manufacturer of the medical implant prior to operating the power tool.


ATTENTION

The product is part of the Activ Energy series and may only be operated with batteries of this series. Batteries may only be charged with battery chargers of this series. Observe the manufacturer's instructions.

⚠ WARNING

Follow the safety and charging instructions and correct usage given in the instruction manual of your Activ Energy Series battery and charger. A detailed description of the charging process and further information are provided in this separate manual.

6. Technical data

Rated voltage	20 V 
Max. motor speed n_{max}	21000 rpm
Cutting performance	
Softwood	max. 28 mm
Hardwood	max. 15 mm
Weight	0.75 kg

Subject to technical changes!

Noise data

Sound pressure level L_{pA}	69.4 dB
Measurement uncertainty K_{pA}	3 dB
Sound power level L_{wA}	77.4 dB
Guaranteed sound power level L_{wA}	81 dB
Measurement uncertainty K_{wA}	3 dB

Vibration parameters

Vibration a_h	0.75 m/s ²
Measurement uncertainty K	1.5 m/s ²

The total vibration emission values specified and the device emissions values specified have been measured in accordance with a standardised test procedure and can be used for comparison of one electric tool with another.

The total noise emission values specified and the total vibration emission values specified can also be used for an initial estimation of the load.

WARNING

The noise emission values and vibration emission value can vary from the specified values during the actual use of the power tool, depending on the type and the manner in which the electric tool is used, and in particular the type of workpiece being processed.

Try to keep the stress as low as possible. For example: Limit working time. In doing so, all parts of the operating cycle must be taken into account (such as times in which the power tool is switched off or times in which it is switched on, but is not running under a load).

7. Unpacking

WARNING

**The product and the packaging material are not children's toys!
Do not let children play with plastic bags, films or small parts!
There is a danger of choking or suffocating!**

- Open the packaging and carefully remove the product.
- Remove the packaging material, as well as the packaging and transport safety devices (if present).
- Check whether the scope of delivery is complete.
- Check the product and accessory parts for transport damage. Immediately report any damage to the transport company that delivered the Product. Later claims will not be recognised.
- If possible, keep the packaging until the expiry of the warranty period.
- Familiarise yourself with the product by means of the operating manual before using for the first time.

- With accessories as well as wearing parts and replacement parts use only original parts. Spare parts can be obtained from your specialist dealer.
- When ordering please provide our article number as well as type and year of manufacture for the product.

8. Operation

The cordless pruning shears is driven by an electric motor. The movable cutting blade moves back and forth during the cutting process.

Please refer to the following descriptions for the function of the controls.

CAUTION

Danger of injury!

Do not insert the battery until the battery-powered tool is ready for use.

ATTENTION

Always make sure the product is fully assembled before commissioning!

WARNING

Danger of injury!

Remove the battery from the power tool before carrying out any work on the power tool (e.g. maintenance, tool change, etc.) and when transporting and storing it. There is a risk of injury if the on/off switch is operated unintentionally.

CAUTION

Wear protective gloves when handling the blades!

WARNING

Do not use the product without safety goggles.
Make sure the product is in working order before each use.
There is a risk of personal injury and damage to property.

ATTENTION

Make sure that the ambient temperature does not exceed 50°C and does not fall below -20°C during work.

ATTENTION

The product is part of the Activ Energy series and may only be operated with batteries of this series. Batteries may only be charged with battery chargers of this series. Observe the manufacturer's instructions.

8.1. Lubricating the cutting blades (1/9) (Fig. 1, 9)

You can lubricate the cutting blades (1/9) via the grease nipple (15a) using a suitable oil bottle* or use a brush* to apply the oil* directly to the cutting blades (1/9). Ensure that a thin layer of oil is on the cutting blades (1/9).

Lubricate the cutting blades (1/9) after 40 cutting processes.

* = may not be included in the scope of delivery!

8.2. Inserting/removing the battery (18) into/from the battery mount (5) (Fig. 2)**Inserting the battery**

1. Push the battery (18) into the battery mount (5). The battery (18) clicks into place audibly.

Removing the battery

1. Press the unlock button (19) of the battery (18) and remove it from the battery mount (5).

8.3. Switching the product on/off (Fig. 1-3)

Scan the QR code in Fig. 3 for a detailed explanation.

Switching on

1. Remove the blade protector (10).
2. Press the on/off switch (6).
The product beeps twice and the on/off switch (6) lights up blue continuously.

3. Before cutting for the first time, you must actuate the start lever (7) twice within 1 second.

As soon as the product is activated, it beeps again. When you release the start lever (7), the cutting blade (1) opens if it was previously closed or opens to the cutting diameter.

4. The cutting blade (1) closes if and as long as you press the start lever (7).

Change the cutting diameter:

- You can choose between two cutting diameters:
 - 15 mm
 - 28 mm
- Press and hold the start lever (7) for 3 seconds. The cutting blade (1) closes. The product beeps once to indicate that the cutting diameter has been changed. When you release the start lever (7), the cutting blade (1) opens again.

Standby mode:

- The product switches to standby mode if there is no operation for 1 minute. The product beeps once.
- To activate standby mode manually, press and hold the start lever (7) for 5 seconds. The product beeps twice, the cutting blade (1) closes when you release the start lever (7) and remains closed.
- To deactivate standby mode, press the start lever (7) twice within 1 second.

Switching off

Note:

We recommend taking the product out of operation when closed.

1. Press the start lever (7) and hold it down for 5 seconds.
The product beeps twice, the cutting blade (1) closes when you release the start lever (7) and remains closed.
2. Press and hold the on/off switch (6) to deactivate the product.
The blue LED extinguishes.
3. Place the blade protector (10) on the cutting blade (1).

Note:

When not in use, the product automatically switches off completely after 3 minutes and the LED goes out.

9. Working instructions

- Before switching on, make sure that the product does not touch any objects.
- Check the product for obvious defects such as loose, worn or damaged parts before each use.
- Check all screws and nuts before the next use. Tighten up loose screws.
- Check the cutting blades for wear regularly and have them resharpened. Blunt cutting blades overload the product. Any resulting damage is not covered by the warranty.
- Blunt cutting blades reduce the cutting performance and impair the work process! Sure signs of blunt cutting blades are leaving an indentation, reduced performance and a poor cutting pattern.
- Securely hold the product by the handle.
- Check the material to be processed for foreign objects such as nails, screws etc. and remove them.
- Do not exert excessive pressure on the product. Let the product do the work.

WARNING

Ensure that your free hand has enough of a gap to the cutting area – danger due to cuts!

WARNING

Do not use the product to cut materials other than those described in the operating manual.

- **Never misuse the product.**
- Do not use the product to cut wild growth or undergrowth.
- Use a handsaw to cut thicker branches.
- The product is to be used like a normal garden shears. Grasp the product by the handle in one hand.
- Observe the maximum cutting performance for soft wood and hard wood as specified in 6..
- If the material to be cut is too thick or too hard, the cutting blades open again automatically after closing.
- The material properties of the wood such as the moisture, rootedness or direction of growth affect the cutting result and the maximum diameter that can be cut.

10. Cleaning and maintenance

WARNING

Have maintenance and repair tasks that are not described in this operating manual, carried out by a specialist workshop. Use only original spare parts.

There is a risk of accident! Always carry out maintenance and cleaning work with the motor switched off and the mains plug disconnected. There is a danger of injury! Let the Product cool down before all maintenance and cleaning tasks. Elements of the engine are hot. There is a danger of injury and burning!

The product can start unexpectedly and cause injuries.

- Switch off the product before all cleaning and maintenance work.
- Allow the product to cool down.
- Remove the battery!

10.1. Cleaning

WARNING

Do not spray the product with water or clean it under running water. There is a danger of electric shock and the product could be damaged.

- Keep protective devices, air vents and the motor housing as free of dust and dirt as possible. Rub the product clean with a clean cloth* or blow it off with compressed air* at low pressure. We recommend that you clean the product directly after every use.
- Never immerse the product in water or other liquids for cleaning.
- Clean the product at regular intervals using a damp cloth* and a little soft soap. Do not use any cleaning products or solvents; they could attack the plastic parts of the product. Make sure that no water can penetrate the product interior.
- Always keep the product clean, dry and free from oil or grease. Remove dust after each use and before storage.

10.2. Maintenance

There are no parts which can be repaired by the user within this product. Contact a qualified professional to have the product checked and repaired.

- Check the product for obvious defects such as loose, worn or damaged parts before each use.

10.2.1. Replacing the cutting blades (1/9) (Fig. 4-8)

1. Loosen the Allen screw (8) and remove it together with the sprocket washer (3).
Use a 4 mm Allen key (12).
2. Loosen and remove the sprocket nuts (2).
Use a 13 mm socket spanner (13).
3. Turn the product around and loosen the Phillips head screws (16) on the product casing.
Use a Phillips screwdriver (11).
4. Remove the cover (14) from the product casing.
5. Remove the stud bolts (15) and the blade insert (17).
6. Replace the cutting blades (1/9).
7. Lubricate the cutting blades (1/9) if necessary as described in 8.1..
8. Re-insert the stud bolts (15), the blade insert (17) and the new cutting blades (1/9) into the product.
Ensure that the blade insert (17) is touching the gear wheel.
9. Place the cover (14) on the product casing and attach it with the Phillips head screws (16).
Ensure that the lug on the cover (14) is in the recess on the product casing.
10. Secure the cover (14) with the Phillips head screws (16).
Use a Phillips screwdriver (11).
11. Tighten the sprocket nuts (2).
Use a 13 mm socket spanner (13).
12. Secure the sprocket washer (3) with the Allen screw (8).
Use a 4 mm Allen key (12).
Attention: Hand-tighten the sprocket washer (2) and Allen screw (8).
13. Perform a test run.
Attention: If the cutting blade (1) does not close, the sprocket nuts (2) and Allen screw (8) may have been tightened too much.
Loosen the sprocket nuts (2) and the Allen screw (8) slightly, and try again.

10.2.2. Adjusting the cutting blade (Fig. 1, 5, 6)

1. Loosen the Allen screw (8).
Use a 4 mm Allen key (12).
2. Use the 13 mm socket spanner (13) to tighten the sprocket nuts (2) until the cutting blade (1) no longer moves sideways.
3. Re-tighten the Allen screw (8).
Use a 4 mm Allen key (12).

11. Transport (Fig. 1)

1. For transport or when storing the product, cover the cutting blades (1/9) with the blade protector (10).
2. Secure the product to prevent it slipping and toppling.

12. Storage

Preparation for storage

1. Remove the battery.
2. Clean and check the product for damage.
3. For transport or when storing the product, cover the cutting blades with the blade guard.
4. Fertiliser and other garden chemicals contain substances that can have a severely corrosive effect on the metal parts. Do not store the product in the vicinity of these substances.

Store the product and its accessories in a dark, dry and frost-free place that is inaccessible to children.

The optimum storage temperature is between 5°C and 30°C.

Store the product in its original packaging.

Cover the product to protect it from dust or moisture. Store the operating manual with the product.

13. Repair & ordering spare parts

After repairs or maintenance, make sure that all safety-related parts are installed and are in perfect condition. All parts which may cause injury must be kept where they are inaccessible to children or others.

ATTENTION

According to the German Product Liability Act, no liability is accepted for damage caused by improper repairs or by not using original spare parts.

Such work should be performed by a customer service centre or an authorised specialists. The same applies to accessory parts.

Spare parts and accessories can be obtained from our Service Centre. To do this, scan the QR code on the front page.

13.1. Ordering spare parts

Please provide the following information when ordering spare parts:

- Model designation
- Item number
- Type plate data

Spare parts / accessories

Blade protector – Article no.:	5911606006
Cutting blade (movable) – Article no.:	5911606009
Cutting blade (fixed) – Article no.:	5911606010

14. Troubleshooting

Fault	Possible cause	Remedy
The product cannot be started.	The battery power is too weak.	Charge the battery.
	The battery is not properly inserted.	Push the battery into the battery mount. The battery clicks into place audibly.
	On/off switch defective.	Please contact our service department.
	Motor defective.	
Product works with interruptions.	Internal loose contact.	Please contact our service department.
	On/off switch defective.	

Fault	Possible cause	Remedy
The cutting blade becomes hot.	The cutting blade is blunt.	Replace the cutting blade.
	The cutting blade has nicks.	Check or replace the cutting blade.
	The cutting blade is dirty.	Cutting blade is dirty.
	Excessive friction.	Check that the sprocket nuts and screws are tight.
	Lack of lubrication on the cutting blades.	Lubricate the cutting blades.

15. Warranty Details



FERREX[®]

20V Pruner Shears

Warranty Details

REGISTER YOUR PURCHASE AT www.aldi.com.au/en/about-aldi/product-registration/
TO KEEP UP-TO-DATE WITH IMPORTANT PRODUCT INFORMATION

The product is guaranteed to be free from defects in workmanship and parts for a period of 60 months (dependant on product) from the date of purchase. Defects that occur within this warranty period, under normal use and care, will be repaired, replaced or refunded at our discretion. The benefits conferred by this warranty are in addition to all rights and remedies in respect of the product that the consumer has under the Competition and Consumer Act 2010 and similar state and territory laws.

Our goods come with guarantees that cannot be excluded under the Australian Consumer Law. You are entitled to a replacement or refund for a major failure and for compensation for any other reasonably foreseeable loss or damage. You are also entitled to have the goods repaired or replaced if the goods fail to be of acceptable quality and the failure does not amount to a major failure.

AFTER SALES SUPPORT

1300 855 831

support@scheppach.com.au



16. Repair and Refurbished Goods or Parts Notice



FERREX®

20V Pruner Shears

Repair and Refurbished Goods or Parts Notice

**REGISTER YOUR PURCHASE AT www.aldi.com.au/en/about-aldi/product-registration/
TO KEEP UP-TO-DATE WITH IMPORTANT PRODUCT INFORMATION**

Unfortunately, from time to time, faulty products are manufactured which need to be returned to the Supplier for repair.

Please be aware that if your product is capable of retaining user-generated data (such as files stored on a computer hard drive, telephone numbers stored on a mobile telephone, songs stored on a portable media player, games saved on a games console or files stored on a USB memory stick) during the process of repair, some or all of your stored data may be lost.

We recommend you save this data elsewhere prior to sending the product for repair.

You should also be aware that rather than repairing goods, we may replace them with refurbished goods of the same type or use refurbished parts in the repair process.

Please be assured though, refurbished parts or replacements are only used where they meet ALDI's stringent quality specifications.

If at any time you feel your repair is being handled unsatisfactorily, you may escalate your complaint. Please telephone us on 1300 855 831 or write to us at:

RossMac Pty. Ltd.
Unit 6, 4 Ovata Drive, Tullamarine, Victoria, 3043, Australia
1300 855 831
support@scheppach.com.au

Opening hours:
Monday - Friday 8:00am-6:00pm

AFTER SALES SUPPORT

1300 855 831

support@scheppach.com.au



Notes

ALDI GUARANTEES THAT OUR EXCLUSIVE BRAND PRODUCTS ARE DEVELOPED TO OUR STRINGENT QUALITY SPECIFICATIONS. IF YOU ARE NOT ENTIRELY SATISFIED WITH THIS PRODUCT, PLEASE RETURN IT TO THE NEAREST ALDI STORE WITHIN 60 DAYS FROM THE DATE OF PURCHASE, FOR A FULL REFUND OR REPLACEMENT, OR TAKE ADVANTAGE OF OUR AFTER SALES SUPPORT BY CALLING THE SUPPLIER'S CUSTOMER SERVICE HOTLINE.



Made in China
Ferrex© is a registered trademark of ALDI Stores
DISTRIBUTED BY:
ALDI STORES
1 Sargents Road
Minchinbury NSW 2770
www.aldi.com.au

After Sales Support



1300 855 831
 support@scheppach.com.au

717856

Model:
F-PRS28

3/2025

5

YEAR WARRANTY