



# User Manual

## Contents

Overview .....	03
Utilisation .....	04
Contents of Box .....	06
Explanation of symbols .....	07
Introduction .....	09
Layout .....	10
Scope of delivery .....	11
Intended use .....	11
Safety regulations .....	13
Technical data .....	18
Before first use .....	19
Preparing for operation .....	21
Operation .....	22
Maintenance and cleaning .....	24
Storage and transport .....	27
Troubleshooting .....	28
Disposal and recycling .....	29
Warranty details .....	33
Repair and refurbished goods or parts notice .....	34

## FERREX<sup>®</sup> LAWN MOWER - 173cc DM51S



Original instructions  
Warning: Read the instructions before using the machine

ALDI guarantees that our exclusive brand products are developed to our stringent quality specifications. If you are not entirely satisfied with this product, please return it to the nearest ALDI store within 60 days from the date of purchase, for a full refund or replacement, or take advantage of our after sales support by calling the supplier's Customer Service Hotline.



Made in China

FERREX<sup>®</sup> is a registered trademark of ALDI Stores

DISTRIBUTED BY:

ALDI STORES  
1 SARGENTS ROAD  
MINCHINBURY NSW 2770  
www.aldi.com.au

AFTER SALES SUPPORT

704349

1300 855 831

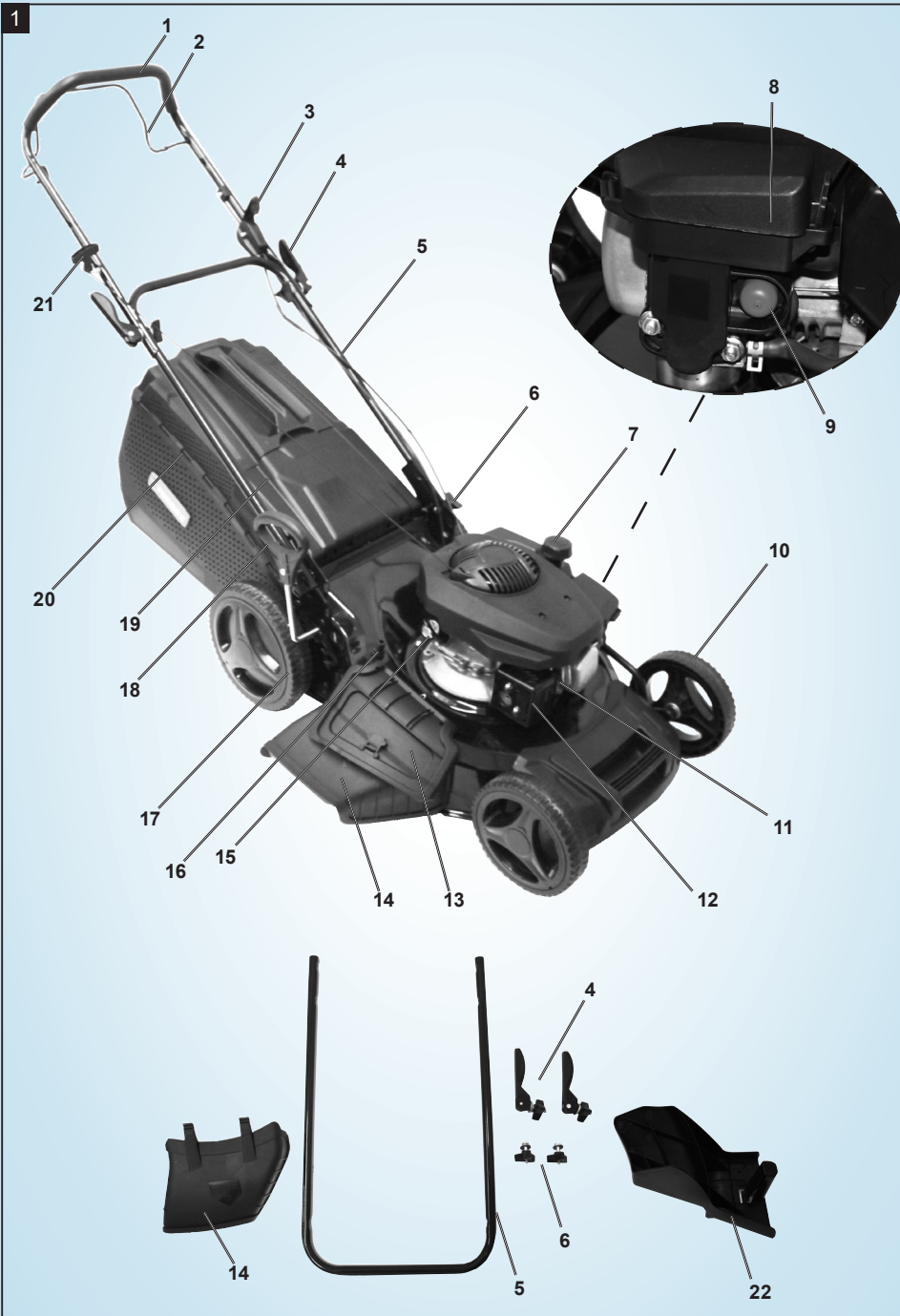
support@scheppach.com.au

MODEL:  
DM51S

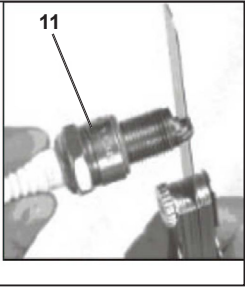
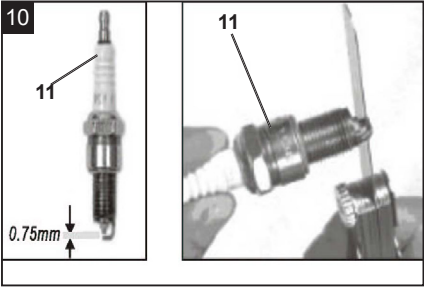
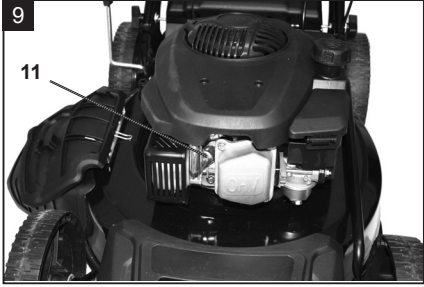
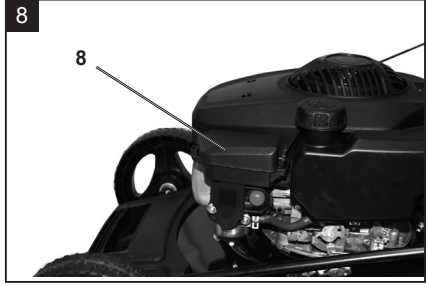
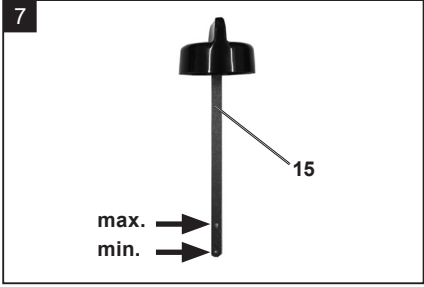
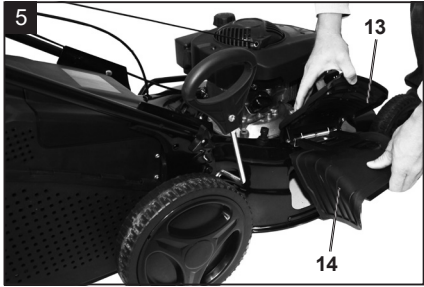
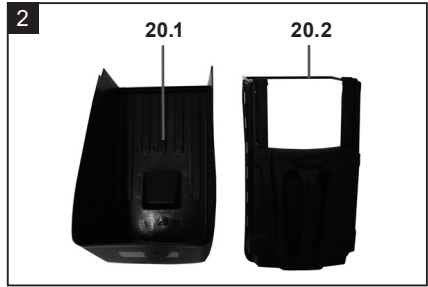
02/2021

**3**  
YEARS  
WARRANTY

## Overview

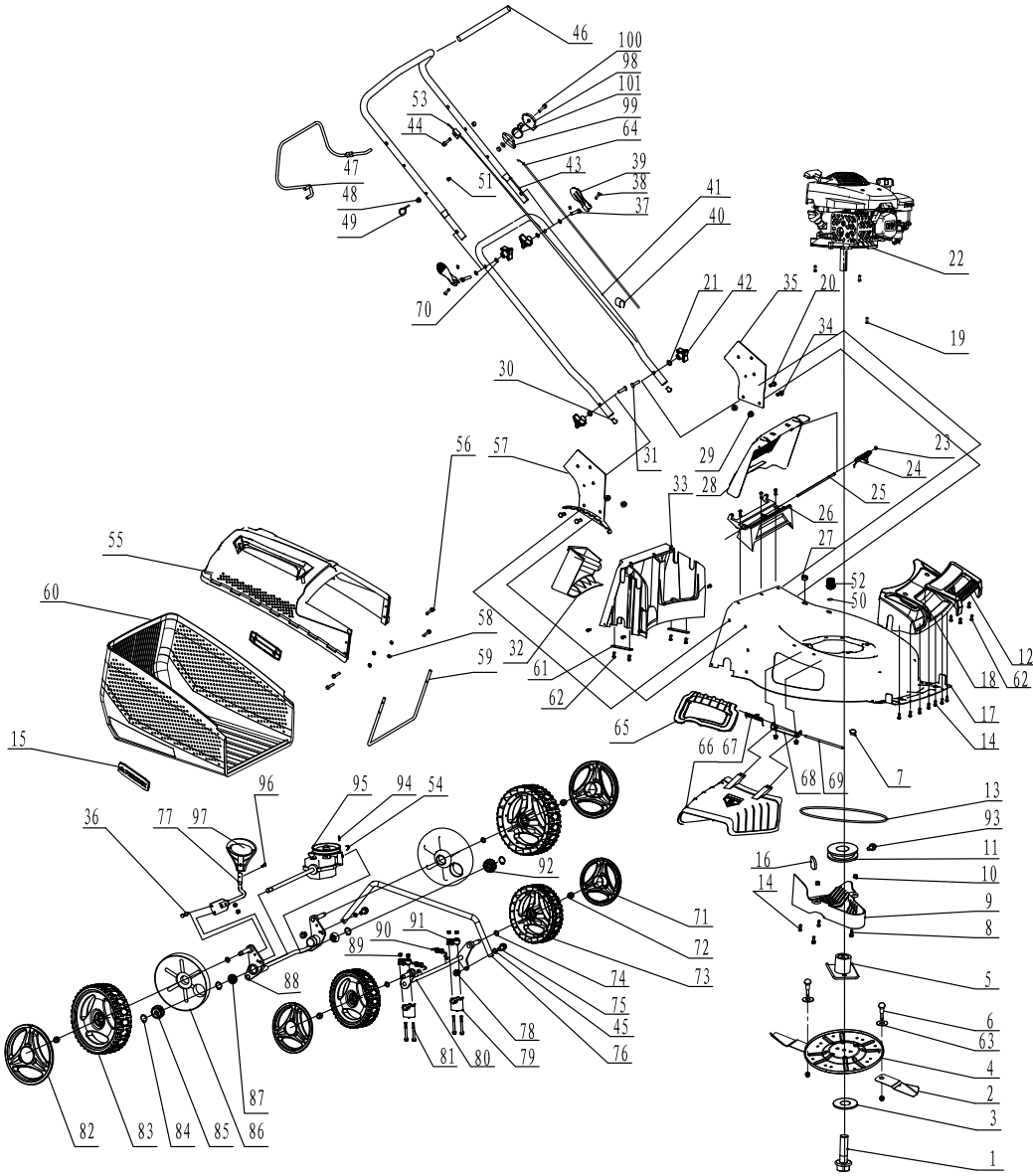


Dok./Rev.-Nr.704349\_201013



### Contents of Box

- 1 x Lawn mower
- 1 x Lower handle
- 2 x Star grip nut
- 2 x Locking lever
- 1 x Grass catcher
- 1 x Mulching block
- 1 x Side discharge chute
- 1 x Warranty Certificate
- 1 x Manual



## Explanation of symbols

	Observe all safety instructions before use
	Caution - Read the operating instructions to reduce the risk of injury!
	On a slope, do not mow uphill or downhill.
	Before operating the lawn mower, remove lawn debris which may be ejected by the blade.
	There is a risk of debris being ejected when the engine is running. Make sure you keep a safe distance.
	Make sure other people also keep a safe distance.
	Remove the ignition cable before all maintenance work, and read the instructions for use.
	Warning! Risk of injury! Do not let your hands or feet come in contact with the blades when the motor is running.
	Important. Exhaust gas is poisonous, do not operate in an unventilated area.
	Danger - Hot surface!
	Wear ear-muffs and safety goggles!
	Wear safety shoes!
	Wear safety gloves!

	<p>Attention! Operating materials are flammable and explosive. Do not fill with fuel while the motor is hot or running.</p>
	<p>Fuel tank capacity</p>
	<p>Engine oil</p>
	<p>Length knives. Max. Cutting width</p>
	<p>Guaranteed sound power</p>
	<p>Primer-Button</p>
	<p>Check oil level</p>
	<p>Warranty period.</p>
	<p>Comply with the Australian norms and directive.</p>
	<p>Warranty class.</p>

## I. Introduction

Congratulations on choosing to buy a FERREX® product.

All products brought to you by FERREX® are manufactured to the highest standards of performance and safety, and as part of our philosophy of customer service and satisfaction, are backed by our comprehensive **3 Year Warranty**.

We hope you will enjoy using your purchase for many years to come.

### **Note:**

According to the applicable product liability law the manufacturer of this high pressure washer is not liable for damages which arise on or in connection with this high pressure washer in case of:

- improper handling,
- non-compliance with the instructions for use,
- repairs by third party, non-authorised skilled workers,
- installation and replacement of non-original spare parts,
- improper use.

### **Recommendations:**

Read the entire text of the operating instructions prior to the assembly and operation of the lawn mower.

These operating instructions are intended to make it easier for you to get familiar with your lawn mower and utilise its intended possibilities of use.

The operating instructions contain important notes on how to work safely, properly and economically with your lawn mower and how to avoid dangers, save repair costs, reduce downtime, and increase the reliability and working life of the lawn mower.

In addition to the safety regulations contained herein, you must in any case comply with the applicable regulations of your country with respect to the operation of the lawn mower.

Put the operating instructions in a clear plastic folder to protect them from dirt and humidity, and store them near the high pressure washer. The instructions must be read and carefully observed by each operator prior to starting the work. Only persons who have been trained in the use of the lawn mower and have been informed on the related dangers and risks are allowed to use the lawn mower. The required minimum age of 16 years must be met.

In addition to the safety notes contained in the present operating instructions and the special regulations of your country, the generally recognised technical rules for the operation of this lawn mower must be observed.

## AFTER SALES SUPPORT

09

## II. Layout (Fig. 1)

1. Handle
2. Drive lever
3. Speed lever
4. Locking lever
5. Lower handle
6. Star grip nut
7. Fuel tank cap
8. Air filter cover
9. Primer button
10. Wheel
11. Spark plug/Spark plug cover
12. Exhaust
13. Side ejector cover
14. Side discharge chute
15. Oil filler cap/Dipstick
16. Hose connection
17. Drive wheel
18. Wheel height adjustment
19. Discharge flap
20. Grass catcher
21. Pull starter
22. Mulching block

### III. Scope of delivery

Lawn mower	(1x)
Lower handle	(1x)
Star grip nut	(2x)
Locking lever	(2x)
Grass catcher	(1x)
Mulching block	(1x)
Side discharge chute	(1x)
Warranty Certificate	(1x)
Manual	(1x)

- Open the packaging and take out the lawn mower carefully.
- Remove the packaging material as well as the packaging and transport bracing (if available).
- Check that the delivery is complete.
- Check the lawn mower and accessory parts for transport damage.
- If possible, store the packaging until the warranty period has expired.

#### **⚠ Attention!**

**The lawn mower and packaging materials are not toys!**

**Children must not be allowed to play with plastic bags, film and small parts!  
There is a risk of swallowing and suffocation!**

### IV. Intended use

Before starting any work, all protective and safety devices must be in place.

- The machine has been designed to be operated by one person.
- The operator is responsible for third parties in the area of operations.
- All safety and hazard notices on the machine must be observed.
- All safety and hazard notices on the machine must be kept in a completely legible condition.
- Use the machine in a technically flawless condition only, as well as for its intended purpose, in a safe manner and being aware of dangers, in compliance with the operating instructions!
- Disruptions which can affect safety in particular must be eliminated straight away!
- The manufacturer's safety, operation and maintenance instructions as well as the

### AFTER SALES SUPPORT

technical data given in the calibrations and dimensions must be adhered to.

- Relevant accident prevention regulations and other generally recognized safety and technical rules must also be adhered to.
- The machine may only be used, maintained or repaired by trained persons who are familiar with the machine and have been informed about the dangers. Unauthorized modifications of the machine exclude a liability of the manufacturer for damages resulting from the modifications.
- The machine is intended for use only with original spare parts and original tools from the producer.
- Any other use is considered to be not intended. The manufacturer excludes any liability for resulting damages, the risk is exclusively borne by the user.
- The device must not be used for commercial, technical or industrial applications.
- If you are not sure whether working conditions are safe or unsafe, do not work with the machine.
- The petrol lawn mower is intended for private domestic use. This product is not intended for commercial, industrial or trade use.

**Important!** Due to the high risk of bodily injury to the user, the lawn mower may not be used to trim bushes, hedges or shrubs, to cut scaling vegetation, planted roofs, or balcony-grown grass, to clean (suck up) dirt and debris off walkways, or to chop up tree or hedge clippings. Moreover, the lawn mower may not be used as a power cultivator to level out high areas such as molehills.

- For safety reasons, the lawn mower may not be used as a drive unit for other work tools or tool kits of any kind.

## **WARNING**

For your own safety, please thoroughly read this manual and the general safety instructions before turning the device on. If you give the device to third parties, always include these instructions.



## V. Safety regulations

These operating instructions provide places concerning your safety which are marked with this indication: ⚠

Furthermore this manual contains other important sections which are marked with the word "**Attention!**".

### ⚠ DANGER

Failure to follow these instructions may cause serious danger to life or danger or fatal injuries.

### ⚠ WARNING

Failure to follow these instructions may cause danger to life or danger of serious injuries.

### ⚠ CAUTION

Failure to follow these instructions may cause light to medium risk of injury.

### ⚠ NOTE

Failure to follow these instructions may cause danger of damage of the engine or other property values.

### ⚠ CAUTION

When using the equipment, a few safety precautions must be observed to avoid injuries and damage. Please read the complete operating instructions and safety regulations with due care. Keep this manual in a safe place, so that the information is available at all times. If you give the equipment to any other person, hand over these operating instructions and safety regulations as well. We cannot accept any liability for damage or accidents which arise due to a failure to follow these instructions and the safety instructions.

**The following must not use the machine:**

Children and other people who do are not familiar with the operating manual (local stipulations may specify a minimum age for users).

People under the influence of alcohol, drugs and medication, as well as those who are tired or ill.

**1. Safety instructions for handoperated lawn mowers****Note**

- Read the directions with due care. Familiarize yourself with the settings and proper operation of the machine. Never allow children or other persons who are not familiar with the operating instructions to use the mower. Contact your local governmental agency for information regarding minimum age requirements for operating the mower.
- Never mow in the direct vicinity of persons - especially children - or animals. Always keep in mind that the operator is responsible for accidents involving other persons and/or their property.
- If you give the equipment to any other person, give them these operating instructions as well.
- Always wear sturdy, non-slip footwear and long trousers when mowing. Never mow barefoot or in sandals.
- Check the grounds on which the machine will be used and remove all objects such as stones, wires, toys, wood and so on.

**⚠ WARNING**

Petrol is highly flammable! Therefore:

- Only store petrol in containers designed to hold petroleum-based liquids.
- Only refuel out in the open and do not smoke during the refueling process.
- Always refuel the lawn mower before starting the engine. Always ensure that the fuel tank cap is closed when the engine is running and when the mower is hot; also do not refuel.
- If petrol has overflowed, do not under any circumstances attempt to start the engine. Instead, remove the machine from the affected area. Avoid starting the engine until the petrol fumes have completely evaporated.

- For safety reasons, the petrol tank and other tank closures must be replaced if they are damaged.
- Replace defective mufflers.
- Before using the mower, visually inspect it to ensure that the blade, mounting bolts and the entire cutting apparatus are in good working order (i.e. not worn out or damaged). To prevent any imbalance, replace worn out or damaged blades and mounting bolts as a set only (if applicable).
- Please note that where a mower has more than one blade, the rotation of one of the blades can cause the others to rotate as well.

## Handling

- Do not let the combustion engine run in enclosed areas, as dangerous carbon monoxide gas can build up.
- Only mow in broad daylight or in well-lit conditions. Avoid using the machine on wet grass as far as possible.
- Do not use the lawn mower in a thunderstorm - risk of lightning strike!
- Always maintain good footing on inclines.
- Only operate the machine at a walking pace.
- For machines with wheels: Always mow across hills i.e. never straight up or straight down.
- Be particularly careful when you change direction on a slope.
- Do not mow on overly steep inclines.
- Always be extra careful when turning the mower around and when pulling it towards you.
- Switch off the lawn mower and ensure that the blade has stopped rotating whenever the mower has to be tilted for transporting over areas other than lawns and whenever it has to be moved from or to the area you want to mow.
- Never use the lawn mower if the blade or safety grilles are damaged, or without the attached guards, e.g. deflectors and/or grass catching devices.
- Do not adjust or overclock the engine speed settings.
- Release the engine brake before you start the engine.
- Start the engine with care, in accordance with the manufacturer's instructions. Make sure that your feet are far enough away from the mower blade!
- Do not tilt the lawn mower when you start the engine unless the mow-

## AFTER SALES SUPPORT

15

er must be raised off of the ground a little in order to start it. In the latter case, tilt the mower as little as absolutely necessary and only raise the side opposite to that of the user.

- Never start the engine while standing in front of the chute.
- Never move your hands or feet toward or under any rotating parts. Keep clear of the chute opening at all times.
- Never lift or carry a lawn mower with the engine running.
- Switch off the engine and pull the spark plug boot. Make sure that all rotating parts are stopped:
  - before you dislodge any blockages or clogs in the chute.
  - before carrying out any checks, cleaning, maintenance or other work on the lawn mower
  - if the lawn mower strikes a foreign body, examine it for signs of damage and carry out any necessary repairs before restarting and continuing to work with the mower. If the lawn mower begins to experience exceptionally strong vibrations, immediately switch it off and check it.
- Switch off the engine:
  - when you leave the lawn mower.
  - before you refuel.
- Operation of the machine at higher than normal speed can lead to an increased risk of accidents.
- Take care when carrying out installation work on the machine, and avoid trapping fingers between the moving cutting tool and the fixed parts of the machine.
- Please be particularly careful when mowing on ground that may subside, on nearby landfills, trenches and embankments.
- Observe improper maintenance, the use of non-compliant spare parts, or removal or modification of the safety devices may result in damage to the device and serious injury to the person working with it.
- Use only manufacturer recommended cutting tools and accessories. The use of other tools and other accessories may cause injury to the user. Always keep the lawnmower in good working condition.
- Check the device regularly and make sure before each use that all start locks and push buttons function properly.
- Please note that the safety systems or features of the lawnmower must not be tampered with or deactivated.
- Note that the user should not modify or manipulate any sealed engine

speed control settings.

- The user must be adequately trained in use, adjustment and operation (including prohibited operations).
- It is necessary to take sufficient breaks to reduce the noise and vibration load.

## **Residual risks and accident prevention standards**

### **Neglect of ergonomic principles**

#### **Negligent handling of personal protective equipment (PPE)**

Negligent handling or omission of the personal protective equipment may cause serious injuries.

- Wear prescribed personal protection equipment.

#### **Human behaviour, misbehaviour**

- For any work be fully concentrated.

⚠ **Residual risks** - Cannot be entirely excluded.

### **Danger from noise hearing damage**

Prolonged unprotected work with the device may cause hearing damage.

- Always wear ear-muffs.

### **In case of emergency**

In case of a possibly occurring accident take the necessary first aid steps as appropriate and obtain qualified medical aid as quickly as possible.

During longer work, because of vibrations, there is a risk of circulation problems in the user's hands (white-finger-syndrome). White-finger-syndrome is a vascular disease where the small blood vessels in fingers and toes contract seizure-like. The affected areas are no longer supplied with blood and therefore look very pale. Frequent use of vibrating machines can cause nerve damage in people whose circulation is compromised (e.g. smokers, people with diabetes).

If you notice unusual impairment, immediately stop the work and consult a doctor. Observe the following notices in order to reduce risks:

- Keep your body, and particularly your hands, warm in cold weather.
- Take regular breaks during which you should move your hands to

promote circulation.

- Ensure the lowest possible vibration of the machine by regularly maintaining it and keeping components tight.

## VI. Technical data

Type engine	four stroke engine
Cubic capacity	173 cm <sup>3</sup>
Rotation speed	2800 U/min
Fuel	Regular grade petrol/lead-free max. 5% bioethanol
Capacity tank/petrol	1 l
Motor oil	SAE 30/10W30
Capacity tank/oil	0.5 l
Cutting height adjustment	25 - 75 mm / 7-level
Collection bag capacity	65 l
Cutting width	51 cm
Weight	30.4 kg
Power	3 kW
Cutting blade part number	602042

### Subject to technical changes!

Information concerning noise emission measured according to relevant standards:

Sound pressure level  $L_{pA} = 85$  dB(A)

Uncertainty  $K_{pA} = 3$  dB(A)

Sound power level  $L_{WA} = 96.1$  dB(A)

Guaranteed sound power level  $L_{WA} = 98$  dB(A)

Uncertainty  $K_{WA} = 1.83$  dB(A)

Wear ear-muffs.

The impact of noise can cause damage to hearing.

Vibration  $A_{hv} = 7.218$  m/s<sup>2</sup>

Uncertainty  $K = 1.5$  m/s<sup>2</sup>

## VII. Before first use

### Before starting the equipment

#### Assembling the components

Some parts of the mower come disassembled. For quick and easy assembly, read and follow the instructions below.

Important! You will need the following additional tools (not supplied) for assembly, and also for maintenance work:

- A 1 litre measuring jug (oil/petrol resistant)
- A petrol can (5 litres is sufficient for approx. 6 operating hours)
- A funnel (suitable for the tank's petrol filler neck)
- Household wipes (to wipe up oil/petrol residue; dispose of these at a filling station)
- A petrol suction pump (plastic, available from DIY stores)
- An oil can with hand pump (available from DIY stores)
- Spark plug wrench
- 0.4 liter of engine oil (SAE 30/ 10W30)

#### Assembly of the handles (Fig. 1)

1. Take the mower and attachment parts out of the packaging and check that all parts are present.
2. Attach the lower handle (5) with the star grip nuts (6) at the mower.
3. Attach the handle (1) on the lower handle (5) and fix it with the locking levers (4).
4. Insert the pull starter (21) in the designated hook at the handle (1).

#### Assembly of the grass catcher (Fig. 2 / 3)

1. Push the two half parts (20.1 / 20.2) together until it locks.

**Attaching the grass catcher (Fig. 4)**

1. Lift the rear discharge flap (19) in order to position the assembled grass catcher (20). **NOTE:** Do NOT ever start the lawn mower if the rear discharge flap (19) does not fully return to the close position if the grass catcher (20) is not fitted.
2. Plug in the grass catcher (20) until it locks in space.
3. Release the rear discharge flap (19) to secure the grass catcher (20) into place.  
**NOTE:** Always empty the grass catcher (20) before it has reached maximum capacity, otherwise it will decrease the performance of the lawn mower.  
**TIP:** Do not leave grass clippings in the grass catcher (20) for extended periods of time.

**Assembly of the side discharge chute (Fig. 5)**

**⚠ WARNING!** Ensure the engine is NOT operating when fitting the side discharge chute (14).

Do not operate or have the engine running when the side ejector cover (13) is opened and the side discharge chute (14) is not fitted.

**NOTE:** The side discharge chute (14) is used to distribute grass clippings from the side of the mower while the mower is in use. To use this function, the grass catcher (20) is NOT required to be assembled on the lawn mower.

1. Raise the side ejector cover (13) to be able to position the side discharge chute (14) onto the side of the deck of the lawn mower.
2. 2.
3. Place the side discharge chute (14) into position on the side of the deck and release the side ejector cover (13).
4. To remove the side discharge chute (14), raise the side ejector cover (13), and remove the side discharge chute (14). Lower / release the side ejector cover (13).



## VIII. Preparing for operation

### Mulch and mowing (Fig. 1 / 6)

Using the mower without the grass catcher (20) attached: the lawn mower will mulch as it cuts and the fine grass clippings are distributed back onto the grass surface without leaving piles of grass clippings.

**⚠ WARNING!** Ensure the engine is NOT operating when undertaking this task.

1. Remove the grass catcher (20) by lifting the discharge flap (19) and releasing the grass catcher (20).
2. Lift the discharge flap (19), insert the mulching block (22) into position, then release and close the discharge flap (19).
3. Ensure the side ejector cover (13) is in the closed position. Do NOT use the side discharge chute (14) when mulch and mowing.

### Adding and Checking the oil (Fig. 1 / 7)

**IMPORTANT:** The engine of this lawn mower is packed with **NO OIL** in the engine. Prior to starting the engine, **Oil MUST** be added to the sump of the engine.

Failure to add sufficient oil will result in damage to the engine which is **NOT** covered under the warranty of the lawn mower.

On a new lawn mower, the engine needs to be filled with 500 ml of SAE 10W/30 engine oil.

Each time the lawn mower is used, the oil level should be checked and if low, add sufficient oil to ensure the oil level is to the full mark on the dipstick (15).

1. Position the lawn mower on a flat and level surface. Clean the area directly around the oil filler cap (15).
2. Remove the oil filler cap / dipstick (15) by turning turn in an anti clockwise direction and lift the oil filler cap / dipstick (15) outwards. Clean the dipstick (15) with a clean cloth, cleaning away any visual oil.
3. FOR A NEW LAWN MOWER, add 500ml of 4 stroke SAE 30/10W30 engine oil.
4. Insert the oil filler cap / dipstick (15) back and secure it by turning in a clockwise direction.
5. Again remove the oil filler cap / dipstick (15) and check the oil level. It should be at the top of the full (max) indicator on the dipstick.
6. If low, add oil slowly into the engine. Do not overfill. After adding oil, wait one minute and then recheck the oil level.
7. Replace and tighten the oil filler cap / dipstick (15). Always ensure the oil filler cap is firmly locked in place before the engine is started.

**NOTE:** Do not allow engine to run low on oil as it will reduce the life of the engine.

**NOTE:** Do not over fill with oil above the full indicator mark.

## AFTER SALES SUPPORT

**Fuelling (Fig. 1)**

⚠ **WARNING!** Do not refill fuel tank while engine is running or is hot.

⚠ **WARNING!** Do not smoke when refueling.

**DO NOT use Ethanol based fuels. Do NOT mix oil with fuel.**

- Be careful not to admit dust, dirt, water or other foreign objects into the fuel.
  - Wipe off spilt fuel thoroughly before starting engine.
  - Ensure you DO NOT fuel the lawn mower in close proximity to any open flames, lit cigarettes, or hot objects.
1. Unscrew the fuel tank cap (7) and pour fresh unleaded fuel into the tank with the aid of a funnel.
  2. Be careful not to over fill or spill any fuel. If this happens, wipe the spill with a clean rag.
  3. Start the engine at least 3 metres away from the area where the fuel tank has been filled in order to avoid the risk of fire.

**Adjusting the cutting height (Fig. 1)**

The mower has one lever to easily adjust the cutting height. There are 7 height settings.

**NOTE:** Always try to adjust the cutting height of the lawn mower while positioned on the area of grass you plan to mow.

It is recommended to start on a higher setting and mow a trial area of lawn before deciding on the final cutting height position. Then readjust if necessary.

1. To increase the cutting height pull the wheel height adjustment (18) outward towards the wheel, and move it up a notch, towards the rear of the lawn mower.
2. To decrease the cutting height pull the wheel height adjustment (18) outward towards the wheel, and move it down a notch, towards the engine.
3. After adjustment, ensure the wheel height adjustment (18) is fully located in the selected notch.

## IX. Operation

**⚠ WARNING :** The blade begins to rotate As soon as the engine is started.

### Starting the engine (Fig. 1)

1. Move the speed lever (3) to the START/RUN position (downwards).
2. Press the primer button (9) fully 2-3 times.
3. Firmly hold the pull starter (21) & pull slowly until resistance is felt, then pull rapidly until the engine starts.

### Stopping the engine (Fig. 1)

1. Pull the speed lever (3) upwards into the STOP position.

### Mowing advice (Fig. 1)

1. Before mowing always check and clear the grassed area for all foreign objects, especially solid ones semi concealed in the ground such as rocks, stumps and garden stakes.
2. Sharp blades cut cleanly and efficiently, if the blades are dull it will tear the grass. This will result in the ends turning brown. When the blades no longer cut cleanly either sharpen them or replace them.
3. To safely operate the mower ensure all four wheels are on the ground and be careful not to lose your footing or control of the mower. Be very careful when mowing uneven or rough ground. Keep a firm grip on the handle bar at all times, always walk, never run with the lawn mower.
4. For healthy growth, grass should not be cut too short. The grass will remain healthier, greener and require less watering.
5. Vary your cutting pattern from week to week, this will help to prevent matting and graining of the grass.
6. If using the mulching function, and grass is piling up behind the lawn mower during the cutting action, lift the lawn mower to the next cutting height using the wheel height adjustment (18).

## Operating functions of the lawn mower

Self propelled or manual operation of the lawn mower: This lawn mower has the option to be manually pushed or engine driven self propelled when the engine is operating.

### 1. Manual operation (Fig. 1):

The lawn mower is manually maneuvered under the user's own power when the mower is operating i.e the user is pushing the lawn mower. To operate this way manually, simply leave the drive lever (2) in its standard position.

### 2. Self propelled operation (Fig. 1):

The self propelled operation will only operate when the engine of the lawn mower is operating, and the drive lever (2) has been activated by lifting it up to the handle (1) and holding in position, hence the mower will move forward itself with the operator steering and directing from the handlebars.

The self propelled operation is ONLY in the forward direction.

## X. Maintenance and cleaning

**IMPORTANT:** Never work on or touch any current-conducting parts of the ignition system while the engine is running. Pull the spark plug cover (11) from the spark boot before doing any maintenance or assembly work. Never carry out any work on the equipment while the engine is running. Work that is not described in these operating instructions, should only be carried out by authorized workshops.

### Cleaning

The lawn mower should be cleaned thoroughly every time after it has been used. This applies in particular to its underside and the blade mount. Tilt the lawn mower to the rear by pressing down the handle (1).

**NOTE:** Do not tilt the lawn mower by more than 90 degrees. It is easiest to remove dirt and grass immediately after mowing. Dried grass remnants and dirt may impair the mowing operation. Check if the grass ejector chute is free of grass remnants and remove any if necessary. Never clean the mower using a water jet or a high-pressure cleaner. Ensure that no water can get into the interior of the equipment. Do not use aggressive cleaning agents such as cold cleaners or petroleum ether.

### Deck wash (Fig. 1)

The deck wash feature allows you to wash/clean the underside of the lawn mower deck using a standard garden hose fitting.

**⚠ WARNING!** It is recommended to wear gloves during this process so as to not risk

any personal injury from the blades when cleaning the underside of the deck.

1. Position mower on a flat and level section of grass, which will not cause problems if the grass and surrounding area will get wet.  
NOTE: It is NOT recommended to perform this operation on a concrete surface as the concrete may be stained.
2. Remove the grass catcher (20) and ensure the discharge flap (19) is closed.
3. Attach a standard quick connect garden hose fitting (not supplied) to the hose connection (16).
4. Raise the deck height to approximately mid height using the wheel height adjustment (18).
5. Start the lawn mower and run at a low speed.
6. Turn on the water at the tap, then increase the speed of the lawn mower so as to distribute the water under the entire deck.
7. Run the process with the water running for approx 5 min or shorter if no more grass is washing out from under the deck and then turn off the water. Continue to run the lawn mower at medium speed for a few minutes to assist in drying out the under deck.
8. Turn off the lawn mower and remove the standard hose fitting from the hose connection (16).

### Cutting blades

For safety reasons, have all cutting blade sharpening, balancing and mounting work carried out by an authorized service center. To achieve optimal results, we recommend to have the blades checked once a year.

### Damaged cutting blades

If, in spite of all caution, the cutting blades come into contact with an obstacle, switch off the engine immediately.

Tilt the mower to the side and check the cutting blades for damage. Damaged or bent cutting blades must be replaced. Never straighten a bent cutting blade. Never work with bent or heavily worn cutting blades as this will result in vibrations, causing further damage to the mower.

**⚠ WARNING!** Risk of injury when working with a damaged cutting blade.

### Resharpener the cutting blade

The blade edges can be resharpened with a metal file. To avoid imbalance, the cutting blade resharpening work should only be carried out by an authorized service center.

**Removing oil (Fig. 1)**

**IMPORTANT:** Drain the oil while the engine is still warm to ensure rapid and complete draining.

1. Change the engine oil every year before the start of the season.
2. Empty the fuel tank (with a petrol suction pump)
3. Place a flat oil drip tray in front of the mower (min. volume 1 Litre).
4. Remove the oil filler cap/dipstick (15) and tip over the mower until the whole oil is run out into the oil drip tray.
5. Wipe up any spilt oil
6. Refill the oil tank.

**NOTE:** Please dispose of used engine oil in a manner that is compatible with the environment. We suggest you take it in a sealed container to your local service station for reclamation. Do not throw it in the trash or pour it into the earth.

**Air filter maintenance (Fig.8)**

**NOTE:** A dirty air filter will restrict air flow to the carburettor.

To prevent carburettor malfunction, service the air filter regularly.

Check that the air filter is clean and dry of dirt.

Filters thick with debris will not allow the engine to breathe and result in difficult starting and poor engine performance.

The air filter should be checked after approximately 25 hours of use, or annually.

1. Open the air filter cover (8) and remove the air filter.
2. To loosen debris, gently tap the air filter on a hard surface or use compressed air. If the filter is excessively dirty, replace with a new filter.

**NOTE:** Never clean the air filter with petrol or inflammable solvents. Clean the air filter only with compressed air or by tapping it.

**Checking / replacing the spark plug (Fig. 9 / 10)**

Do not touch the spark plug or the spark plug cover (11) when the engine runs. High voltage!

Risk of burning on the hot engine. Wear protective gloves.

Check the spark plug and the spark gap on a regular basis:

1. Pull the spark plug cover (11) from the spark plug.
2. Remove the spark plug using a spark plug wrench (not included). The spark gap must be 0.6 to 0.7 mm.

Clean the spark plug when it is contaminated.

Replace the spark plug:

- once a month if the device is often used,
- when the insulating body is damaged,
- when the electrodes show excessive erosion,
- when the electrodes show excessive dirt or oil.

## **XI. Storage and transport**

- Never store the mower (with petrol in the tank) inside a building in which petrol fumes could come into contact with open flames or sparks.
- Allow the motor to cool before you put the lawn mower in an enclosed area.
- In order to avoid fire hazards, keep the engine, exhaust and the area around the fuel tank free from grass, leaves and leaking grease (oil).

### **Preparing the mower for long-term storage**

Caution: Do not empty the petrol tank in enclosed areas, near fire or when smoking. Petrol fumes can cause explosions and fire.

- Clean and maintain the machine before storage
- Empty the petrol tank with a petrol suction pump.
- Start the engine and let it run until any remaining petrol has been used up.
- Change the oil at the end of every season. To do so, remove the used engine oil from a warm engine and refill with fresh oil.
- Remove the spark plug from the cylinder head. Fill the cylinder with approx. 20 ml of oil from an oil can. Slowly pull back the starter handle, which will bathe the cylinder wall with oil. Screw the spark plug back in.
- Clean the cooling fins of the cylinder and the housing.
- Be sure to clean the entire machine to protect the paint.
- Store the machine in a well-ventilated place.

### **Transport of the mower in vehicles**

- Clean the machine before transport.
- Empty the petrol tank with a petrol suction pump.
- Remove the spark plug from the cylinder head.
- Secure the lawn mower sufficiently so that it cannot slip and cause damage or injuries during transportation.

## XII. Troubleshooting

### Troubleshooting

The table shows potential failures, their possible cause and removal options. However, if you are unable to remove the problem, contact a professional to assist you.

#### ⚠ CAUTION!

Always switch off the engine and pull the ignition cable before starting any inspection or adjustment work.

#### ⚠ CAUTION!

If, after making an adjustment or repair to the engine, you let it run for a few minutes, remember that the exhaust and other parts will get hot. Thus, do not touch parts that emanate heat, as these may burn you.

Fault	Possible cause	Remedy
Loud while running, machine vibrates heavily	<ul style="list-style-type: none"> <li>• Screws are loose</li> <li>• Blade fasteners are loose</li> <li>• Blade is unbalanced</li> </ul>	<ul style="list-style-type: none"> <li>• Check screws</li> <li>• Check blade fasteners</li> <li>• Replace blade</li> </ul>
Engine does not start	<ul style="list-style-type: none"> <li>• Brake lever not pressed</li> <li>• Speed lever in wrong position</li> <li>• Spark plug is defective</li> <li>• Fuel tank is empty</li> <li>• Contaminated fuel</li> <li>• Cold environment</li> <li>• Engine faulty</li> </ul>	<ul style="list-style-type: none"> <li>• Press brake lever</li> <li>• Check setting</li> <li>• Replace spark plug</li> <li>• Refill with fuel</li> <li>• Empty fuel tank and fill with clean fuel</li> <li>• Push the primer button</li> <li>• Contact authorised customer service</li> </ul>
Engine runs unsteadily	<ul style="list-style-type: none"> <li>• Air filter is soiled</li> <li>• Spark plug is soiled</li> </ul>	<ul style="list-style-type: none"> <li>• Clean the air filter</li> <li>• Clean the spark plug</li> </ul>
Uneven mowing results	<ul style="list-style-type: none"> <li>• Blade is blunt</li> <li>• Cutting height is too low</li> </ul>	<ul style="list-style-type: none"> <li>• Sharpen the blade</li> <li>• Set correct height</li> </ul>
Unsatisfactory bagging of the grass	<ul style="list-style-type: none"> <li>• Cutting height is too low</li> <li>• Blade is worn</li> <li>• Catcher is clogged</li> </ul>	<ul style="list-style-type: none"> <li>• Set correct height</li> <li>• Replace the blade</li> <li>• Empty the catcher</li> </ul>



## XII. Disposal and recycling

The equipment is supplied in packaging to prevent it from being damaged in transit. The raw materials in this packaging can be reused or recycled. The equipment and its accessories are made of various types of material, such as metal and plastic. Never place defective equipment in your household refuse. The equipment should be taken to a suitable collection center for proper disposal.

If you do not know the whereabouts of such a collection point, you should ask in your local council offices.











LAWN MOWER

## Warranty Details

---

REGISTER YOUR PURCHASE AT [www.aldi.com.au/en/about-aldi/product-registration/](http://www.aldi.com.au/en/about-aldi/product-registration/) TO KEEP UP-TO-DATE WITH IMPORTANT PRODUCT INFORMATION



---

The product is guaranteed to be free from defects in workmanship and parts for a period of 36 months from the date of purchase. Defects that occur within this warranty period, under normal use and care, will be repaired, replaced or refunded at our discretion. The benefits conferred by this warranty are in addition to all rights and remedies in respect of the product that the consumer has under the Competition and Consumer Act 2010 and similar state and territory laws.

Our goods come with guarantees that cannot be excluded under the Australian Consumer Law. You are entitled to a replacement or refund for a major failure and for compensation for any other reasonably foreseeable loss or damage. You are also entitled to have the goods repaired or replaced if the goods fail to be of acceptable quality and the failure does not amount to a major failure.

---

AFTER SALES SUPPORT

  1300 855 831

 [support@scheppach.com.au](mailto:support@scheppach.com.au)

MODEL:DM51S PRODUCT CODE: 704349 02/2021

**3**

YEAR WARRANTY



LAWN MOWER

## Repair and Refurbished Goods or Parts Notice

---

Unfortunately, from time to time, faulty products are manufactured which need to be returned to the Supplier for repair.

Please be aware that if your product is capable of retaining user-generated data (such as files stored on a computer hard drive, telephone numbers stored on a mobile telephone, songs stored on a portable media player, games saved on a games console or files stored on a USB memory stick) during the process of repair, some or all of your stored data may be lost.

**We recommend you save this data elsewhere prior to sending the product for repair.**

You should also be aware that rather than repairing goods, we may replace them with refurbished goods of the same type or use refurbished parts in the repair process.

**Please be assured though, refurbished parts or replacements are only used where they meet ALDI's stringent quality specifications.**

If at any time you feel your repair is being handled unsatisfactorily, you may escalate your complaint. Please telephone us on 1300 855 831 or write to us at:

RossMac Pty. Ltd.



P.O. Box 261, Essendon North, Victoria, 3041

1300 855 831

[support@scheppach.com.au](mailto:support@scheppach.com.au)

---

AFTER SALES SUPPORT

  1300 855 831

 [support@scheppach.com.au](mailto:support@scheppach.com.au)

MODEL:DM51S PRODUCT CODE: 704349 02/2021

3

YEAR WARRANTY