

ALDI GUARANTEES THAT OUR EXCLUSIVE BRAND PRODUCTS ARE DEVELOPED TO OUR STRINGENT QUALITY SPECIFICATIONS. IF YOU ARE NOT ENTIRELY SATISFIED WITH THIS PRODUCT, PLEASE RETURN IT TO THE NEAREST ALDI STORE WITHIN 60 DAYS FROM THE DATE OF PURCHASE, FOR A FULL REFUND OR REPLACEMENT, OR TAKE ADVANTAGE OF OUR AFTER SALES SUPPORT BY CALLING THE SUPPLIER'S CUSTOMER SERVICE HOTLINE.



Made in China

FERREX® is a registered trademark of ALDI Stores

DISTRIBUTED BY:

ALDI STORES

1 SARGENTS ROAD

MINCHINBURY NSW 2770

www.aldi.com.au

AFTER SALES SUPPORT

835394 



 1300 855 831



support@scheppach.com.au

MODELL:
F-CAG12

07/2024

5
YEAR
WARRANTY



User Manual

FERREX[®]

12V CORDLESS ANGLE GRINDER F-CAG12

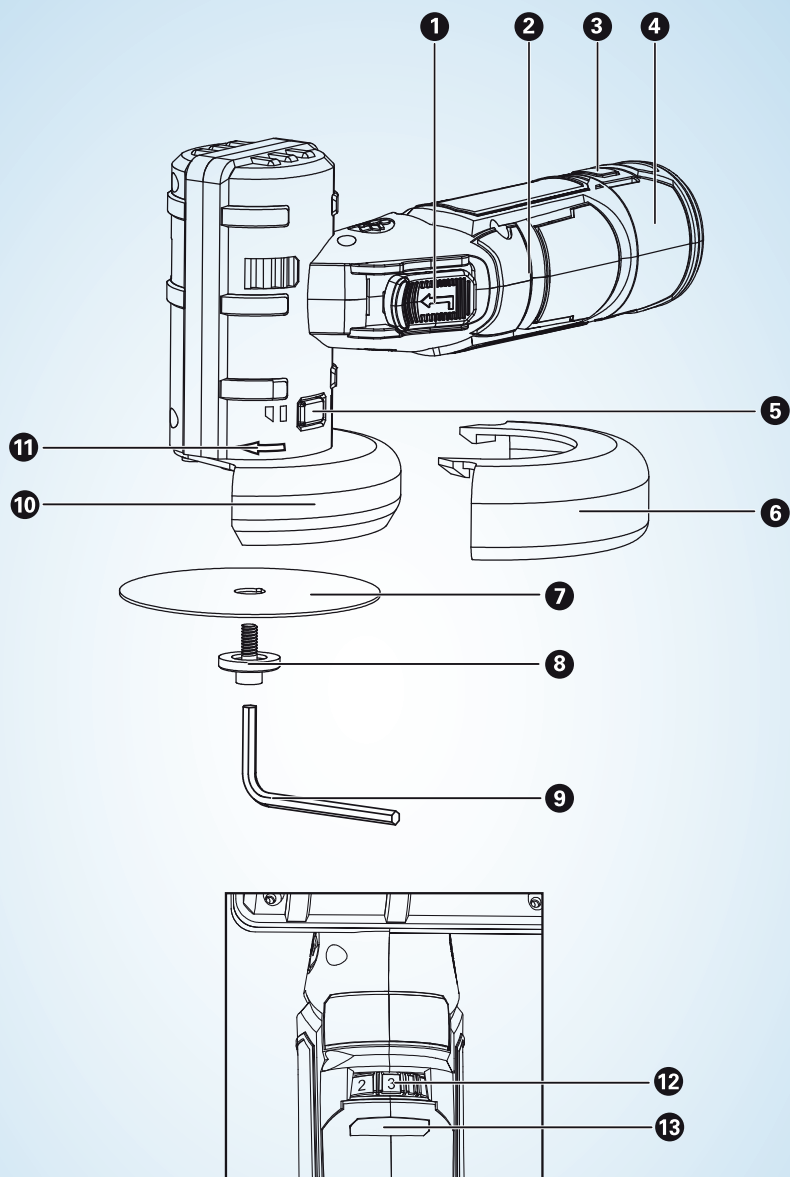


Translation of original instruction manual

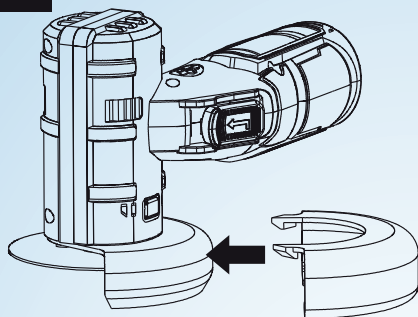


Contents

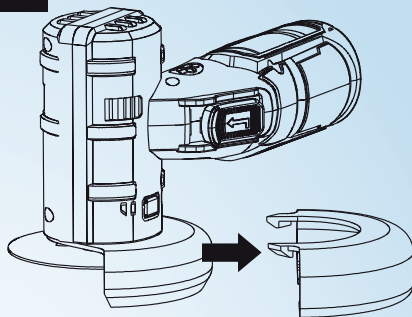
Table of contents:	Page:
1. Introduction	10
2. Device description	11
3. Scope of delivery	11
4. Proper use	12
5. Safety instructions	12
6. Technical data	21
7. Unpacking	22
8. Assembly and adjusting	23
9. Operation	26
10. Working hints for your tool	27
11. Cleaning	28
12. Maintenance	28
13. Repairs	28
14. Storage	29
15. Troubleshooting	29
16. Transport	29
17. Disposal and recycling	30



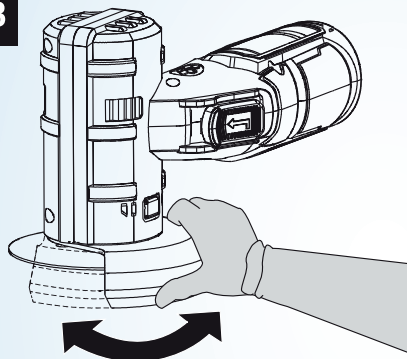
A1



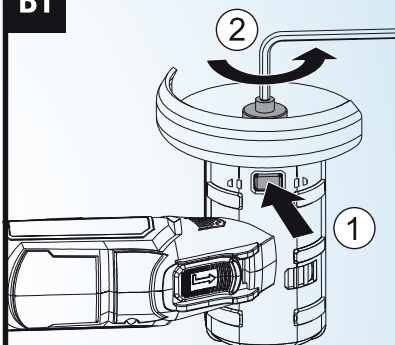
A2



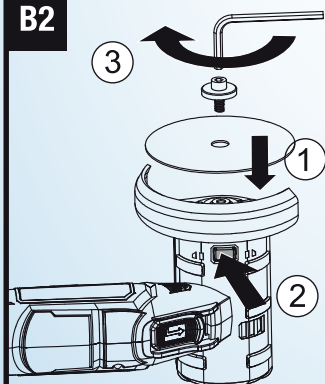
A3



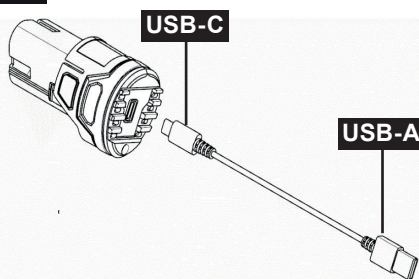
B1



B2

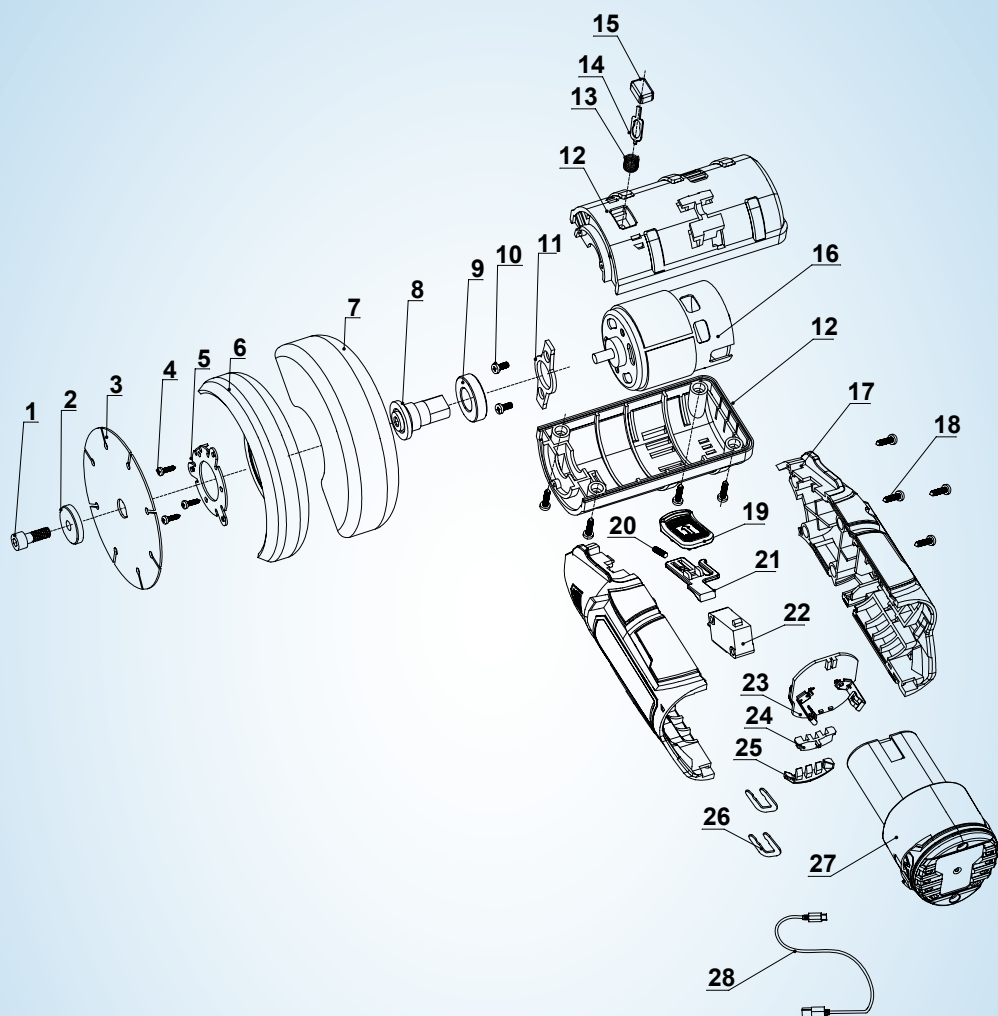


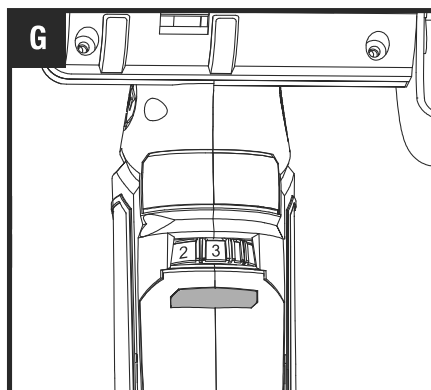
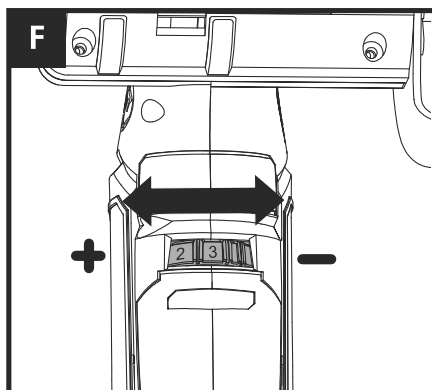
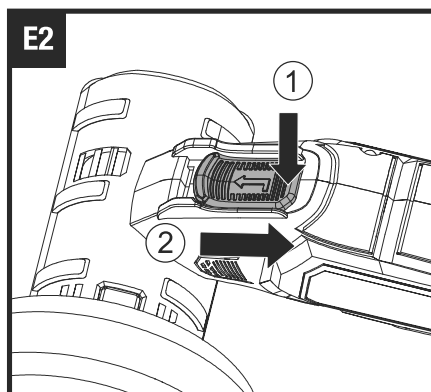
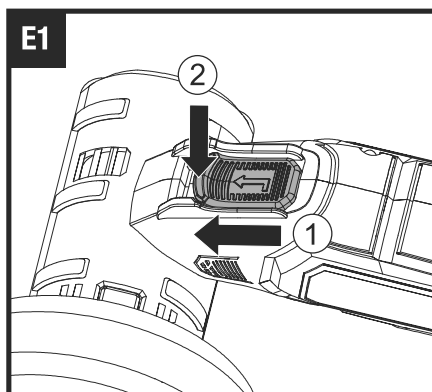
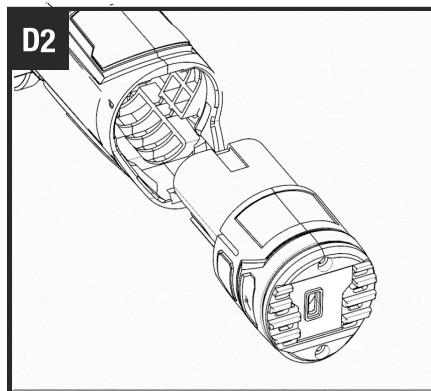
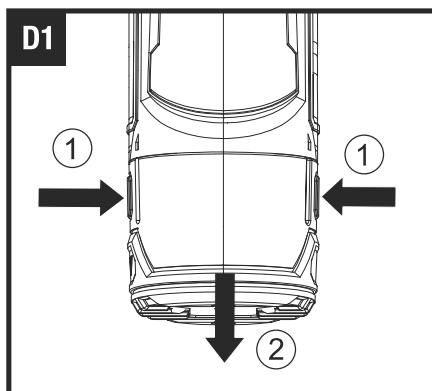
C

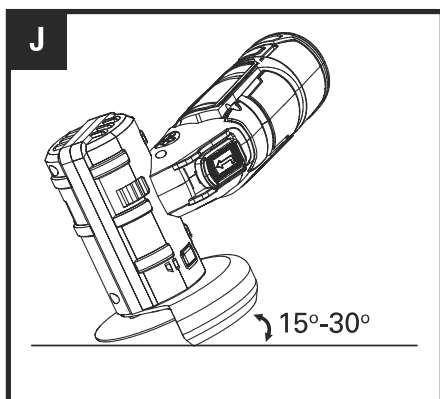
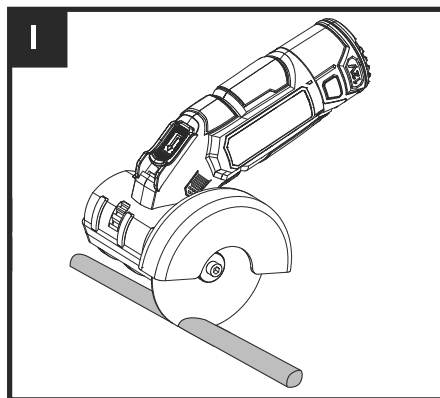
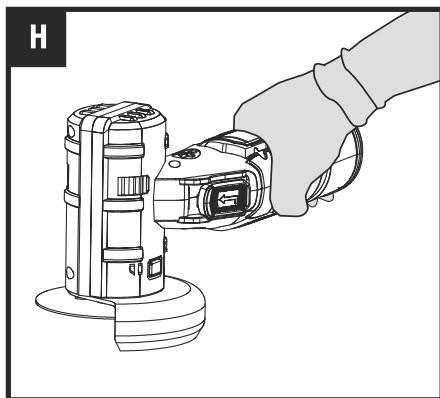


Scope of delivery











- 1 x 12V Angle Grinder
- 1 x USB charging cable
- 1 x 12V Battery
- 1 x Cutting disc
- 1 x Hex key
- 1 x Warranty card
- 1 x Instruction manual







Explanation of the symbols on the device

	Warning - Read the operating manual to reduce the risk of injury.
	Wear hearing protection. Excessive noise can result in a loss of hearing.
	Wear safety goggles. Sparks created during work or fragments, chippings and dust ejected by the device can cause sight loss.
	Wear a dust protection mask. When machining wood and other materials, harmful dust may be generated. Do not machine material containing asbestos!
	Protect batteries from heat and fire.
	Protect batteries from water and moisture.
	The RCM Mark (Regulatory Compliance Mark) indicates that the product complies with the relevant guidelines of the ACMA as well as corresponding government requirements for the safety of electrical devices.
 Li-ion	Lithium-ion battery.
	5-year warranty.
 Attention!	We have marked points in this operating manual that impact your safety with this symbol.

1. Introduction

Congratulations on your purchase of this FERREX® product.

All FERREX® products, are manufactured to the highest standards of performance and safety and are secured by our comprehensive 5-year warranty as part of our customer service.

We hope you will enjoy your purchase for many years to come.

Note:

In accordance with the applicable product liability laws, the manufacturer of this device assumes no liability for damage to the device or caused by the device arising from:

- Improper handling.
- Failure to comply with the operating instructions,
- Repairs carried out by third parties, unauthorised specialists.
- Installing and replacing non-original spare parts,
- Application other than specified.

Recommendations:

Read through the complete text in the operating manual before installing and commissioning the device.

This operating manual should help you to familiarise yourself with your device and to use it for its intended purpose.

The operating manual includes important instructions for safe, proper and economic operation of the device, for avoiding danger, for minimising repair costs and downtimes, and for increasing the reliability and extending the service life of the device.

In addition to the safety instructions in this operating manual, you must also observe the regulations applicable to the operation of the device in your country.

Keep the operating manual at the device, in a plastic sleeve, protected from dirt and moisture. They must be read and carefully observed by all operating personnel before starting the work. The device may only be used by personnel who have been trained to use it and who have been instructed with respect to the associated hazards. The required minimum age must be observed.

In addition to the safety instructions in this operating manual and the separate regulations of your country, the generally recognised technical rules relating to the operation of such machines must also be observed.

We accept no liability for accidents or damage that occur due to a failure to observe this manual and the safety instructions.

2. Device description

Battery-operated Angle Grinder:

1. On/off switch
2. Hand grip area
3. Battery pack release button
4. Battery pack
5. Spindle lock button
6. Wheel guard for cutting
7. Cutting disc
8. Clamping bolt with washer
9. Hex key
10. Wheel guard for grinding
11. Direction-of-rotation arrow on housing
12. Various speed control
13. Battery level

3. Scope of delivery

- 1 x 12V Angle Grinder
- 1 x USB charging cable
- 1 x 12V Battery
- 1 x Cutting disc
- 1 x Allen key
- 1 x warranty card
- 1 x Instruction manual

⚠ Attention!

The device and the packaging material are not children's toys!

Do not let children play with plastic bags, films or small parts!
There is an increased danger of choking or suffocating!

4. Proper use

The product is suitable for the cutting and roughing of metal, concrete or tiles without using water.

The product may only be used in the intended manner. Any use beyond this is improper. The user/operator, not the manufacturer, is responsible for damages or injuries of any type resulting from this.

An element of the intended use is also the observance of the safety instructions, as well as the assembly instructions and operating information in the operating manual. Persons who operate and maintain the product must be familiar with the manual and must be informed about potential dangers.

The liability of the manufacturer and resulting damages are excluded in the event of modifications of the product.

The product may only be operated with original parts and original accessories from the manufacturer.

The safety, operating and maintenance specifications of the manufacturer, as well as the dimensions specified in the technical data, must be observed.

Please note that our products were not designed with the intention of use for commercial or industrial purposes. We assume no guarantee if the product is used in commercial or industrial applications, or for equivalent work.

5. Safety instructions

General safety instructions

Warning!

Read all safety information and instructions. Failure to observe safety information and instructions can result in electric shock, fire and/or serious injuries.

Save all warnings and instructions for future reference. The term “electric tool” used in the safety instructions refers to mains-powered electrical tools (with a mains cable) and battery-powered electrical tools (without a mains cable).

Workplace safety

1) Keep your work area clean and well-lit. Disorganised and unlit work areas can result in accidents.

- 2) **Do not operate power tools in explosive atmospheres, such as in the presence of flammable liquids, gases or dust.** Power tools create sparks which may ignite the dust or fumes.
- 3) **Keep children and bystanders away while operating a power tool.** Distractions can cause you to lose control.

Electrical safety

- 1) **Power tool plugs must match the outlet. Never modify the plug in any way. Do not use any adapter plugs with earthed (grounded) power tools.** Unmodified plugs and matching outlets will reduce risk of electric shock.
- 2) **Avoid body contact with earthed or grounded surfaces, such as pipes, radiators, ranges and refrigerators.** There is an increased risk of electric shock if your body is earthed or grounded.
- 3) **Do not expose power tools to rain or wet conditions.** Water entering a power tool will increase the risk of electric shock.
- 4) **Do not use the cable for another purpose, for example, carrying or hanging the power tool or pulling the plug out of the socket. Keep the cable away from heat, oil, sharp edges or moving device parts.** Damaged or coiled cables increase the risk of an electric shock.
- 5) **If you work with an electric tool outdoors, only use extension cables that are also permitted for outdoor use.** Use of a cord suitable for outdoor use reduces the risk of electric shock.
- 6) **If operating a power tool in a damp location is unavoidable, use a residual current device (RCD) protected supply.** Use of an RCD reduces the risk of electric shock.

Personal safety

- 1) **Always remain attentive, pay attention to what you are doing and be sensible when working with electric tools. Do not use a power tool while you are tired or under the influence of drugs, alcohol or medication.** A moment of carelessness when using electrical tools can result in serious injuries.
- 2) **Wear personal protective equipment and always safety goggles.** Protective equipment such as a dust mask, non-skid safety shoes, hard hat or hearing protection used for appropriate conditions will reduce personal injuries.
- 3) **Prevent unintentional starting. Ensure the switch is in the off-po-**

sition before connecting to power source and/or rechargeable battery, picking up or carrying the tool. Keeping your finger on the switch when carrying the electric tool or having the device already switched on when connecting it to the power supply may result in accidents.

- 4) Remove any adjusting key or screwdriver before turning the power tool on.** A tool or spanner that is located in a rotating device part may result in injuries.
- 5) Do not overreach. Keep proper footing and balance at all times.** This enables better control of the power tool in unexpected situations.
- 6) Dress properly. Do not wear loose clothing or jewellery. Keep hair, clothing and gloves away from moving parts.** Loose clothes, jewellery or long hair can be caught in moving parts.
- 7) If dust extraction and collection devices can be mounted, make sure that they are connected and used properly.** Use of dust collection can reduce dust-related hazards.
- 8) Do not let familiarity gained from frequent use of tools allow you to become complacent and ignore tool safety principles.** A careless action can cause severe injury within a fraction of a second.

Power tool use and care

- 1) Do not overload the device. Use the correct power tool for your application.** The correct power tool will do the job better and safer at the rate for which it was designed.
- 2) Do not use the power tool if the switch does not turn it on and off.** Any electric tool that cannot be controlled with the switch is dangerous and must be repaired.
- 3) Remove the plug from the socket and/or remove the battery before setting the device, changing accessories or putting the device away.** Such preventive safety measures reduce the risk of starting the power tool accidentally.
- 4) Store idle power tools out of the reach of children and Do not let people use the electric tool who are not familiar with it or who have not read these instructions.** Power tools are dangerous in the hands of untrained users.
- 5) Maintain power tools. Check whether moving parts function properly and do not get stuck and whether parts are broken or are damaged and thus adversely affect the electric tool function.**

Have damaged parts repaired before using the device. Many accidents are caused by poorly maintained power tools.

- 6) Keep cutting tools sharp and clean.** Properly maintained cutting tools with sharp cutting edges are less likely to bind and are easier to control.
- 7) Use the power tool, accessories and tool bits etc. in accordance with these instructions, taking into account the working conditions and the work to be performed.** Use of the power tool for operations different from those intended could result in a hazardous situation.
- 8) Keep handles and grasping surfaces dry, clean and free from oil and grease.** Slippery handles and grasping surfaces do not allow for safe handling and control of the tool in unexpected situations.

Using and handling the rechargeable tool

- 1) Only charge the batteries with the USB charging cable provided or a replacement cable recommended by the manufacturer.** A USB cable that is unsuitable for a particular type of battery poses a fire hazard.
- 2) Only use the batteries in power tools that are designed for them.** The use of other batteries can lead to injuries and a risk of fire.
- 3) Keep the unused battery away from paper clips, coins, keys, nails, screws or other small metal objects that could cause a short-circuit between the contacts.** A short-circuit between the contacts of the battery could result in burns or fires.
- 4) Liquid may leak from the battery if used incorrectly. Avoid contact with it. In case of accidental contact, rinse with water. If the liquid gets into your eyes, seek immediate medical attention.** Leaking battery fluid may cause skin irritation or burns.
- 5) Protect the battery from heat, e.g. also from continuous sunlight, fire, water and moisture.** There is a risk of explosion.

Service

- 1) Have your power tool serviced by a qualified repair person using only identical replacement parts.** This will ensure that the safety of the power tool is maintained.

Safety instructions for all applications

Combined safety instructions for grinding and cut-off grinding

- 1) This power tool is to be used as a grinder and cut-off grinder. Read all safety warnings, instructions, illustrations and specifications provided with this power tool.** Failure to follow all instructions listed below may result in electric shock, fire and/or serious injury.
- 2) Operations such as sandpaper grinding, wire brushing or polishing are not recommended to be performed with this power tool.** Operations for which the power tool was not designed may create a hazard and cause personal injury.
- 3) Do not use any accessories that have not been specifically provided or recommended by the manufacturer for this power tool.** Just because you can attach the accessories to your power tool does not guarantee they are safe to use.
- 4) The maximum speed of the accessory tool used must be at least as high as the maximum speed specified for the power tool.** Accessories which rotate faster than the maximum permissible rate can break and throw pieces into the air.
- 5) The external diameter and thickness of the accessory tool used must comply with the dimensions of the power tool.** Incorrectly dimensioned accessory tools cannot be sufficiently shielded or controlled.
- 6) Attachment tools with a thread insert must match the thread of the grinding spindle exactly. For attachment tools that are mounted using a flange, the diameter of the hole on the attachment tool must correspond to the width of the fitting on the flange.** Accessory tools that cannot be firmly fitted to the power tool rotate unevenly, vibrate severely and can lead to a loss of control.
- 7) Never use damaged accessory tools. Before each use, check tools such as grinding discs for chipping and cracks, grinding wheels for cracks, wear or heavy wear. If the power tool or the accessory tool in use is dropped, check to see if it is damaged or use an undamaged accessory tool. Once you have checked and used the tool attachment, ensure that you and all other persons in the vicinity remain outside the plane of the rotating tool attachment and allow the device to run for 1 min. at the maximum speed.** Damaged accessories usually break during the test period.
- 8) Wear personal protective equipment. Depending on application, use face shield, safety goggles or safety glasses. Where appropri-**

ate, wear a dust mask, hearing protection, protective gloves or a special apron that will keep small grinding and material particles away from you. The eye protection must be capable of stopping flying debris generated by various operations. Dust or breathing masks must filter the dust generated during use. Prolonged exposure to high intensity noise may cause hearing loss.

- 9) Ensure that other people remain at a safe distance from your workspace. Anyone who enters the workspace must wear personal protective equipment.** Fragments of the workpiece or broken accessory tools can fly off and cause injury – even outside the immediate working area.
- 10) Hold the power tool by the insulated handles when you are carrying out work in which the accessory tool may come into contact with concealed power cables.** Contact with a live wire may make exposed metal parts of the power tool live and could give the operator an electric shock.
- 11) Keep the power cord away from any rotating accessories.** If you lose control of the device, the mains cable can be severed or caught and your hand or arm pulled into the rotating insert tool.
- 12) Never put the power tool down until the accessory tool being used has come to a complete standstill.** The rotating accessory tool can come into contact with the surface and cause you to lose control of the power tool.
- 13) Do not run the power tool while carrying it at your side.** Accidental contact of your clothing with the rotating attachment part could lead to an injury.
- 14) Clean the ventilation slits of your power tool regularly.** The engine fan draws dust into the housing and a strong accumulation of metal dust can cause electrical hazards.
- 15) Never use the power tool in the vicinity of inflammable materials.** Sparks can ignite such materials.
- 16) Do not use any accessory tools which require liquid coolant.** The use of water or other liquid coolants may lead to an electric shock.

Kick-back and corresponding safety instructions

Kick-back is the sudden reaction resulting from a caught or jammed rotating insert tool, such as a grinding disc, grinding wheel, etc. Catching or jamming results in the rotating insert tool stopping abruptly. As a re-

sult, an uncontrolled electric tool is accelerated against the direction of rotation of the tool attachment at the blocking point.

For example, if a grinding disc catches or jams in the workpiece, the edge of the grinding disc that plunges into the workpiece can get caught, causing the grinding disc to break away or kick back. The grinding disc may either jump toward or away from the operator, depending on direction of the wheel's movement at the point of pinching. Abrasive wheels may also break under these conditions.

Kickback is the result of incorrect or deficient use of the power tool. It can be prevented by suitable precautionary measures, as described in the following.

- 1) Hold the power tool firmly in both hands and position your body and arms so they can absorb the force of a kickback. Always use the additional handle, if available, so that you have the maximum possible control over the kickback force or reaction forces at full speed.** By taking adequate precautions, the operator can stay in control of the kickback and reaction forces.
- 2) Never hold your hand close to a rotating accessory tool.** The accessory tool could jump out of your hand if there is a kickback.
- 3) Avoid having any part of your body in the region in which the power tool is likely to move in event of a kickback.** The kickback will force the power tool in the opposite direction to the direction of rotation of the grinding disc at the blockage.
- 4) Take special care when working near corners, sharp edges, etc. Avoid allowing the accessory tool to bounce back from the workpiece or jam.** The rotating tool attachment tends to jam at corners, sharp edges or when it bounces back. This causes a loss of control or kick-back.
- 5) Do not use chains or toothed saw blades.** Such accessories often cause a kickback or loss of control over the power tool. Special safety instructions for grinding and cut-off grinding
- 6) Only use the grinding bodies approved for your electric tool and the protective cover provided for these grinding bodies.** Grinding bodies that are not intended for the electric tool cannot be adequately shielded and are unsafe.
- 7) Cranked grinding discs must be mounted so that their grinding surface does not protrude above the plane of the protective cover edge.** An improperly mounted grinding disc that protrudes above the level of the protective cover edge cannot be adequately shielded.

- 8) **The protective cover must be securely attached to the electric tool and, for maximum safety, adjusted so that the smallest possible part of the grinding body is open and facing the operator.** The protective cover helps to protect the operator from fragments, accidental contact with the grinding body and sparks that could ignite clothing.
- 9) **Grinding bodies may only be used for the recommended applications. For example: Never grind on the side surfaces of a cutting wheel.** Cutting wheels are designed to remove material with the edge of the disc. Lateral forces on this grinding body can break it.
- 10) **Always use undamaged clamping flanges of the correct size and shape for the grinding disc selected by you.** Suitable flanges support the grinding disc and reduce the danger of the grinding disc breaking. Flanges for cutting wheels may differ from flanges for other grinding discs.
- 11) **Do not use worn grinding discs from large power tools.** Grinding discs for larger power tools are not designed for the higher speeds of smaller power tools and can break.

Further special safety instructions for cut-off grinding

- 1) **Avoid blocking the cutting wheel or applying too much pressure. Do not make excessively deep cuts.** Overloading the cutting wheel increases its stress and susceptibility to tilting or blocking and therefore the possibility of kick-back or breaking of the grinding wheel.
- 2) **Avoid the area in front of and behind the rotating cutting wheel.** If you move the cutting wheel in the workpiece away from you, in the event of a kick-back the power tool with the spinning wheel can be thrown directly towards you.
- 3) **If the cutting wheel jams or you interrupt your work, switch the device off and hold it still in the material until the disc has come to a standstill. Never try to pull the cutting wheel out of the cut while it is still running, otherwise kick-back may occur.** Determine and remedy the cause of the jamming.
- 4) **Do not switch the electric tool on again while it is in the workpiece. Allow the cutting wheel to reach its full speed first before carefully continuing the cut.** Otherwise the disc can get stuck, jump out of the workpiece or cause kick-back.
- 5) **Support plates or large workpieces to reduce the risk of kick-back caused by a jammed cutting wheel.** Large workpieces tend

to sag under their own weight. The workpiece must be supported on both sides of the disc, that is both close to the cutting wheel and at the edge.

- 6) Apply particular caution with “plunge cuts” in existing walls or other areas that are not visible.** The plunging cutting wheel can cause kick-back when cutting into gas or water pipes, electrical lines or other objects.

Safety instructions for battery chargers (not supplied)

The battery charger can be used by children from 8 years of age as well as by persons with reduced physical, sensory or mental capabilities or with a lack of experience or knowledge, if they are supervised or if they have been trained in the safe use of the device and understand the resultant hazards. Children may not play with the device.

Cleaning and user maintenance must not be carried out by children unsupervised.

- Only use the product with the battery charger provided.
- The battery charger (not supplied) is only suitable for indoor operation.
- If the connection cable for this battery charger (not supplied) is damaged then it must be replaced by the manufacturer or their customer services personnel or by a similarly qualified person, in order to avoid hazards.
- Protect electrical parts from moisture. Never immerse them in water or other liquids to avoid an electric shock. Never hold the device under running water. Follow the instructions for cleaning, maintenance and repair.

Residual risks

The product has been built according to state-of-the-art and the recognised technical safety rules. However, individual residual risks can arise during operation.

- Damage to hearing if the stipulated hearing protection is not worn.
- Residual risks can be minimised if the “Safety Instructions” and the “Intended Use” together with the operating manual as a whole are observed.
- Use the product in the way that is recommended in this operating manual. This is how to ensure that your product provides optimum performance.

- Furthermore, despite all precautions having been met, some non-obvious residual risks may still remain.

⚠ WARNING!

This power tool generates an electromagnetic field during operation. This field can impair active or passive medical implants under certain circumstances. In order to prevent the risk of serious or deadly injuries, we recommend that persons with medical implants consult with their physician and the manufacturer of the medical implant prior to operating the power tool.

6. Technical data

Model:	F-CAG12
Rated voltage:	12V (direct current)
Rated speed:	12000 - 19500 rpm
Disc size Ø:	76 mm
Mounting hole diameter Ø:	10 mm
Capacity:	1300 mAh
Battery (integrated):	Lithium-ion
Cells:	3

Only use the following battery charger (not included in scope of delivery) to charge the cordless tool:

Input voltage:	100 - 240 V~
Input AC frequency:	50 / 60 Hz
Output voltage:	5.0 V (direct current)
Output current:	1.5 A
Output power:	8.5 W
Average operating efficiency:	78.2 %
Power consumption at zero load:	0.07 W
Input current:	0.3 A
Protection class:	II (double insulation)
Connection type:	USB (Type C)

Device emissions value

Measured value for noise determined according to AS/NZS 62841.2.3 . The A-weighted noise level of the electric tool is typically:

Sound pressure level LpA = 75.6 dB

Uncertainty KpA = 3 dB

Sound power level LWA = 86.6 dB

Uncertainty KWA = 3 dB

Vibration emission values

Total vibration emission values (vector sum of three directions) determined per EN 60745-2-23:

Total vibration emission values $a_h = 0.732 \text{ m/s}^2$

Uncertainty K = 1.5 m/s^2

⚠ WARNING!

Wear hearing protection!

⚠ NOTE!

- The total vibration emission values specified and the device emissions values specified have been measured in accordance with a standardised test procedure and can be used for comparison of one power tool with another.
- The total vibration emission values specified and the device emissions values specified can also be used for an initial estimation of the load.

⚠ WARNING!

- The vibration and noise emission values can vary from the specified values during the actual use of the power tool, depending on the type and the manner in which the power tool is used, and in particular the type of workpiece being processed.
- Try to keep the stress as low as possible. Some examples of means for reducing the vibration stress are wearing gloves while using the tool and limiting work time. In doing so, all parts of the operating cycle must be taken into account (such as times in which the power tool is switched off or times in which it is switched on, but is not running under a load).

7. Unpacking

Open the packaging and carefully remove the device.

Remove the packaging material, as well as the packaging and transport safety devices (if present).

Check whether the scope of delivery is complete.

Check the device and accessory parts for transport damage. In the event of complaints the carrier must be informed immediately. Later claims will not be recognised.

If possible, keep the packaging until the expiry of the warranty period.

Familiarise yourself with the device by means of the operating manual before using for the first time.

With accessories as well as wearing parts and replacement parts use only original parts. Spare parts can be obtained from your specialist dealer.

When ordering please provide our article number as well as type and year of manufacture for your equipment.

⚠ ATTENTION!

The device and the packaging material are not children's toys! Do not let children play with plastic bags, films or small parts! There is a danger of choking or suffocating!

8. Assembly and adjusting

Information about the battery

⚠ NOTE!

A new battery or one that has not been used for a long time must be charged before it is used for the first time/again.

- The integrated battery is partially charged on delivery. Li-ion rechargeable batteries can be charged at any time without affecting their service life. Interrupting the charging process will not damage the battery.
- This product has a built-in battery which cannot be replaced by the user. The rechargeable battery may only be removed or replaced by the manufacturer or its after-sales service or a similarly qualified person in order to avoid hazards. When disposing of this product, please note that it contains a battery.

Starting the charging process (fig. C)

1. Connect the USB-C Connector on the USB charging cable to the USB power socket .
2. Connect the USB- A connector on the USB charging cable to an USB-A power-source.
3. The battery LED lights up red during charging.
4. The battery is charged when the battery LED is no longer lit.

Ending the charging process

1. Disconnect the USB charging cable from the product.
2. Pull the USB charging cable out of the socket.

To remove the battery, proceed as described in Figures D1 and D2.

Read off the battery level (13) (fig. G)

The battery LED indicates the battery charge level when the product is switched on:

Battery-operated LED	Charge level
red / orange / green	Maximum charge level
red / orange	Medium charge level
red	Low charge level

Mounting the wheel guard

⚠ WARNING!

For work with grinding or cutting discs, the protection guard must be mounted. Use the correct type of disc for application.

Wheel guard for cutting (fig. A1)

Fix the outer guard onto the inner guard until it engages. The inner guard and outer guard assembled together and make up a wheel guard for cutting.

Wheel guard for grinding (fig. A2)

Simply remove the outer guard. The inner guard is used as wheel guard for grinding.

Adjusting the wheel guard (fig. A3)

Turn the wheel guard to the desired position until it engages. No tool is required for this.

Replacing the cutting disc/grinding disc

⚠ WARNING! RISK OF INJURY!

Do not touch grinding and cutting discs before they have cooled down. The discs can become very hot while working.

Removing (fig. B1)

1. Clean the spindle and all parts to be mounted.
2. Press and hold the spindle lock button to lock the spindle. You may need to rotate the spindle using the provided hex key if the spindle lock button cannot be pressed down to the end.
3. Loosen the clamping bolt with washer by turning it anti-clockwise using the provided hex key.

⚠ WARNING!

Actuate the spindle lock button only when the grinder spindle is at a standstill. Otherwise, the machine may become damaged.

Fitting (fig. B2)

⚠ NOTE!

Pay attention to the dimensions of the grinding/cutting disc. The mounting hole diameter must fit the spindle without play. Do not use reducers or adapters.

1. Place the disc on the tool spindle. Ensure it is correctly located.
2. Insert the clamping bolt with washer through the centre of the disc and onto the spindle.
3. Press and hold the spindle lock button to lock the spindle. You may need to rotate the spindle using the provided hex key if the spindle lock button cannot be pressed down to the end.
4. Tighten the clamping bolt with washer by turning it clockwise using the provided hex key. Make sure that the cutting disc / grinding disc is assembled firmly.

⚠ WARNING!

After mounting the cutting disc / grinding disc and before switching on, check that the disc is correctly mounted and that it can turn freely. Make sure that the disc does not graze against the wheel guard or other parts

Approved grinding/cutting disc

The permissible speed [min^{-1}] of the circumferential speed [m/s] of the grinding tools used must at least match the values given in the table.

Disc diameter	76 mm
Disc thickness	1 mm
Mounting hole diameter	10 mm
Rotation speed	19.500 min^{-1}
Circumferential speed	76 m/s

Dust/chip extraction

Dust from materials such as lead-containing coatings, some wood types, minerals and metal can be harmful to one's health. Touching or breathing in the dust can cause allergic reactions and/or lead to respiratory infections of the user or bystanders. Certain dust, such as oak or beech dust, is considered carcinogenic, especially in connection with wood treatment additives (chromate, wood preservative), Materials containing asbestos may only be worked by specialist.

- Provide for good ventilation of the working place.
- It is recommended to wear a P2 filter-class respirator.

Observe the relevant regulations in your country for the materials to be worked.

Prevent dust accumulation at the workplace. Dust can easily ignite.

9. Operation

Switch on/off

Switching on (fig. E1)

Move the on/off switch forward to the tool head and press the front part of the on/off switch down until it latches. Then you can release the on/off switch. Your tool is now locked on for continuous use.

Switching off (fig. E2)

Push down the back of the on/off switch and move the on/off switch backwards to the rear of the tool to switch off.

⚠ WARNING!

The battery is fitted with a fuse. If the device does not start the first time you use it, switch it off again. When restarted, the device will start again.

Speed adjustment (fig. F)

The tool has a variable speed control for precise speed adjustment. Set it to the required speed for operation. The required speed is dependent on the material and is to be determined by a practical trial.

Hand grip area (fig. H)

Hold the tool firmly when operating as shown in Fig H.

Cutting (fig. I)

⚠ WARNING!

For cutting metal, always work with the wheel guard for cutting.

When cutting, work with moderate feed, adapted to the material being cut. Do not exert pressure onto the cutting disc, tilt or oscillate the machine.

Do not reduce the speed of running down cutting discs by applying sideways pressure.

The machine must always work in an up-grinding motion. Otherwise, the danger exists of it being pushed uncontrolled out of the cut.

When cutting profiles and square bar, it is best to start at the smallest cross section.

Rough grinding (fig. J)

⚠ WARNING!

Never use a cutting disc for rough grinding applications. This can cause bodily damaged by using the tool for wrong applications.

⚠ WARNING!

Do not switch the grinder on whilst the disc is in contact with the work piece. Allow the disc to reach full speed before starting to grind.

Always position the guard so that as much of the exposed disc as possible is pointing away from you.

Be prepared for a stream of sparks when the disc touches the metal.

For best tool control, material removal and minimum overloading, maintain an angle between the disc and work surface of approximately 15°-30° when grinding.

Use caution when working into corners as contact with the intersecting surface may cause the grinder to jump or twist. When grinding is complete allow the work piece to cool.

10. Working hints for your tool

1. Always start at no load achieve maximum speed then start working.
2. Do not force the disc to work faster, reducing the Disc's moving speed means longer working time.
3. Always work with a 15°-30° angle between disc and work piece when grinding. Larger angles will cut ridges into the work piece and affect the surface finish. Move the tool across and back and forth over the work piece.
4. When using a cutting disc never change the cutting angle otherwise you will stall the disc and angle grinder motor or break the disc rotation. If you cut in the same direction as the disc rotation the disc may push itself out of the cut slot.
5. When cutting very hard material best results can be achieved with a abrasive cutting disc.
6. When using an abrasive cutting disc it will become very hot. If this happens you will see a full ring of sparks around the rotation disc. Stop cutting and allow to cool at no speed for 2-3 minutes.
7. Always ensure the work piece is firmly held or clamped to prevent movement.

11. Cleaning

WARNING!

Switch off the product and allow the product to cool down before carrying out inspection, maintenance or cleaning work!

Have the product repaired by the service centre or a qualified electrician and only with original spare parts. This ensures that safety of the product is maintained.

- Make sure that no liquids can penetrate the interior of the product.
- Always keep the product clean, dry and free from oil or grease. Remove dust after each use and before storage.
- Regular proper cleaning helps to ensure safe use and prolongs the service life of the product.
- Clean the product with a dry cloth. Use a soft turnout brush for hard-to-reach areas.
- In particular, remove dirt and dust from the vents with a cloth and a soft brush.
- Ventilation openings must always be free.
- Perform a complete recharge of the rechargeable battery at the beginning and at the end of a longer period of non-use.
- If a lithium-ion battery is to be stored for a longer period of time, the charge level must be checked regularly. The optimal state of charge is between 50 and 80 %. The optimal storage climate is cool and dry.

NOTE!

Do not use chemical, alkaline, abrasive or other aggressive cleaning agents or disinfectants to clean the product, as these may damage the surfaces.

Spare parts not listed (such as the battery charger) can be ordered via our call centres.

12. Maintenance

Before and after each use: Check the product and its accessories (e.g. cutting disc, grinding disc) for wear and damage. Replace the accessories if necessary. Observe the technical requirements (see "Technical data").

13. Repairs

There are no parts which can be repaired by the user within this product. Contact a qualified professional to have the product checked and repaired.

14. Storage

- Switch the product off.
- Clean the product as described above.
- Store the product and its accessories in a dark, dry and frost-free place.
- Always store the product in a place inaccessible to children. The optimum long-term storage temperature (longer than 3 months) is between +20 and +26 °C.
- Store the product in its package.

15. Troubleshooting

Fault	Possible cause	Remedy
Disc wobbles or vibrates.	Clamping bolt isn't tight.	Clamp the bolt tight..
	Disc isn't correctly located.	Locate the disc correctly.
Disc is damaged.	The disc is broken because of false use.	Remove and replace the broken disc.
Motor stopped.	The motor is overloaded.	Let the motor cool down.

16. Transport

NOTE!

The integrated Li-ion battery may only be removed by trained or qualified personnel. To remove the battery from the housing, the battery must be empty and the screws of the housing must be loosened. The battery connections must be separated and insulated individually.

- This product contains a rechargeable Li-ion battery and is therefore subject to the legal regulations on hazardous substances. The product with integrated battery can be transported by road and sea without any special requirements.
- Packaging and marking are subject to special requirements in the case of transport by third-party providers (e.g. airline, courier, freight forwarder). A dangerous goods expert must be consulted when transporting through third parties.
- Transport the product in its package.
- Protect the product from shocks and strong vibrations that occur especially during transport in vehicles.

17. Disposal and recycling

The equipment is supplied in packaging to prevent it from being damaged in transit. The raw materials in this packaging can be reused or recycled. The equipment and its accessories are made of various types of material, such as metal and plastic. Defective components must be disposed of as special waste. Ask your dealer or your local council.



FERREX®

12V CORDLESS ANGLE GRINDER



Warranty Details

REGISTER YOUR PURCHASE AT www.aldi.com.au/en/about-aldi/product-registration/ TO KEEP UP-TO-DATE WITH IMPORTANT PRODUCT INFORMATION

The product is guaranteed to be free from defects in workmanship and parts for a period of 60 months from the date of purchase. Defects that occur within this warranty period, under normal use and care, will be repaired, replaced or refunded at our discretion. The benefits conferred by this warranty are in addition to all rights and remedies in respect of the product that the consumer has under the Competition and Consumer Act 2010 and similar state and territory laws.

Our goods come with guarantees that cannot be excluded under the Australian Consumer Law. You are entitled to a replacement or refund for a major failure and for compensation for any other reasonably foreseeable loss or damage. You are also entitled to have the goods repaired or replaced if the goods fail to be of acceptable quality and the failure does not amount to a major failure.

AFTER SALES SUPPORT

  **1300 855 831**

AUS Hotline Costs: Local rate for landline calls*
*Charges may vary dependent upon network operator or mobile network provider.

 support@scheppach.com.au

MODEL: F-CAG12 **PRODUCT CODE:** 835394 07/2024





Repair and Refurbished Goods or Parts Notice

Unfortunately, from time to time, faulty products are manufactured which need to be returned to the Supplier for repair.

Please be aware that if your product is capable of retaining user-generated data (such as files stored on a computer hard drive, telephone numbers stored on a mobile telephone, songs stored on a portable media player, games saved on a games console or files stored on a USB memory stick) during the process of repair, some or all of your stored data may be lost.

We recommend you save this data elsewhere prior to sending the product for repair.

You should also be aware that rather than repairing goods, we may replace them with refurbished goods of the same type or use refurbished parts in the repair process.

Please be assured though, refurbished parts or replacements are only used where they meet ALDI's stringent quality specifications.

If at any time you feel your repair is being handled unsatisfactorily, you may escalate your complaint. Please telephone us on SUPPLIER TELEPHONE or write to us at:


RossMac Pty. Ltd.

Unit 6, 4 Ovata Drive, Tullamarine, Victoria, 3043

Telephone: 1300 855 831 (Monday - Friday 8:00am-6:00pm)

Email: support@scheppach.com.au

AFTER SALES SUPPORT

 1300 855 831

AUS Hotline Costs: Local rate for landline calls*
*Charges may vary dependent upon network operator or mobile network provider.

 support@scheppach.com.au

MODEL: F-CAG12 PRODUCT CODE: 835394 07/2024

